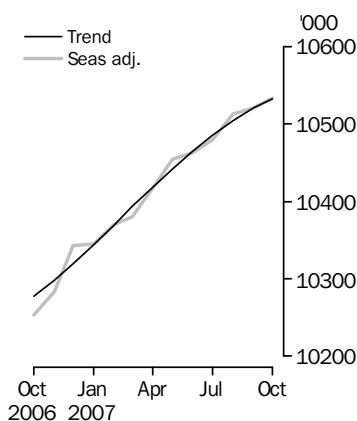


LABOUR FORCE

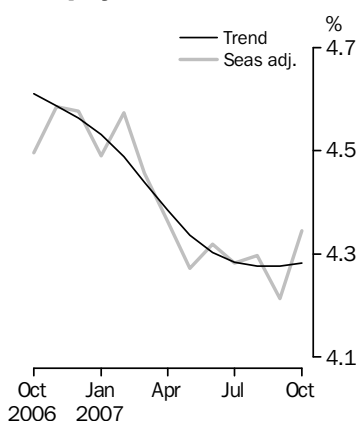
AUSTRALIA

EMBARGO: 11.30AM (CANBERRA TIME) THURS 8 NOV 2007

Employed Persons



Unemployment rate



INQUIRIES

For further information about these and related statistics, contact the National Information and Referral Service on 1300 135 070 or Rebecca Cash on Canberra (02) 6252 6525.

KEY FIGURES

	Sep 2007	Oct 2007	Sep 07 to Oct 07	Oct 06 to Oct 07
Trend				
Employed persons ('000)	10 520.6	10 532.1	11.5	2.5 %
Unemployed persons ('000)	470.0	471.1	1.2	-5.2 %
Unemployment rate (%)	4.3	4.3	0.0 pts	-0.3 pts
Participation rate (%)	65.0	65.0	0.0 pts	0.3 pts
Seasonally Adjusted				
Employed persons ('000)	10 520.9	10 533.8	12.9	2.7 %
Unemployed persons ('000)	462.8	478.5	15.7	-0.9 %
Unemployment rate (%)	4.2	4.3	0.1 pts	-0.2 pts
Participation rate (%)	65.0	65.0	0.1 pts	0.5 pts

KEY POINTS

TREND ESTIMATES (MONTHLY CHANGE)

- EMPLOYMENT increased to 10,532,100
- UNEMPLOYMENT increased to 471,100
- UNEMPLOYMENT RATE remained at 4.3%
- PARTICIPATION RATE remained at 65.0%

SEASONALLY ADJUSTED ESTIMATES (MONTHLY CHANGE)

EMPLOYMENT

- increased by 12,900 to 10,533,800. Full-time employment increased by 70,600 to 7,587,700 and part-time employment decreased by 57,700 to 2,946,100.

UNEMPLOYMENT

- increased by 15,700 to 478,500. The number of persons looking for full-time work increased by 7,400 to 316,300 and the number of persons looking for part-time work increased by 8,300 to 162,200.

UNEMPLOYMENT RATE

- increased by 0.1 percentage point to 4.3%. The male unemployment rate increased by 0.2 percentage points to 4.0%, and the female unemployment rate increased by 0.1% percentage point to 4.8%.

PARTICIPATION RATE

- remained steady at 65.0%.

NOTES

FORTHCOMING ISSUES

ISSUE	RELEASE DATE
November 2007	13 December 2007
December 2007	17 January 2008
January 2008	14 February 2008
February 2008	13 March 2008
March 2008	10 April 2008
April 2008	8 May 2008

FORTHCOMING CHANGES

Following each Census of Population and Housing, the ABS selects a new sample for the Labour Force Survey. This is done to ensure that the sample continues to accurately represent the distribution of the Australian population. A new sample has recently been selected based on the 2006 Census.

In order to reduce the potential impact of the change in sample on labour force statistics, the new sample will be introduced progressively, taking advantage of the existing rotation scheme. Using this scheme, the private dwelling sample in larger urban centres and less remote areas, representing approximately four-fifths of the total sample, will be phased in over the period November 2007 to June 2008. Within these areas, one-eighth of the new sample will be introduced each month under existing sample rotation arrangements. The rest of the sample (in remote, less populated areas and for non-private dwellings) will be introduced in two stages, March and April 2008. Detailed information about the new sample will be provided in *Information Paper: Labour Force Survey Sample Design* (cat. no. 6269.0), which will be released on 27 November 2007.

SAMPLING ERRORS

The estimates in this publication are based on a sample survey. Because the entire population is not enumerated, the published estimates and the movements derived from them are subject to sampling variability. Standard errors give a measure of this variability and appear on pages 28 and 29.

The 95% confidence intervals below provide another way of looking at the variability inherent in estimates from sample surveys. A 95% confidence interval has a 95% chance of including the true value of the estimate.

MOVEMENTS IN SEASONALLY ADJUSTED SERIES BETWEEN SEPTEMBER AND OCTOBER 2007

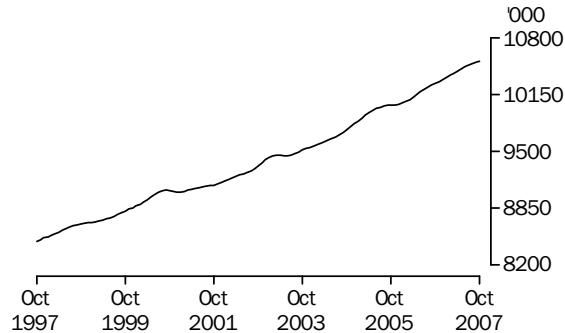
	<u>Monthly change</u>	<u>95% Confidence interval</u>
Total Employment	12 900	-34 100 to 59 900
Total Unemployment	15 700	-8 500 to 39 900
Unemployment rate	0.1 pt	-0.1 pt to 0.3 pts
Participation rate	0.1 pt	-0.1 pt to 0.3 pts

Brian Pink
Australian Statistician

PRINCIPAL LABOUR FORCE SERIES TREND ESTIMATES

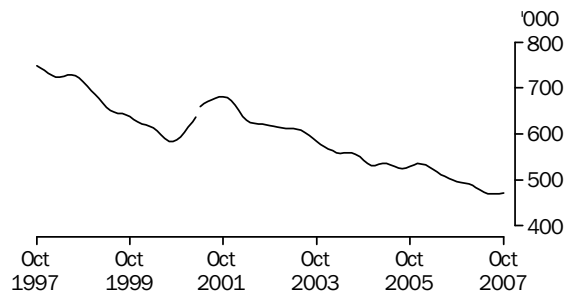
EMPLOYED PERSONS

The trend estimate of employed persons rose from 8,474,300 in October 1997 to 9,056,500 in September 2000. The trend then fell slightly to 9,037,400 in December 2000, before generally rising to stand at a high of 10,532,100 in October 2007.



UNEMPLOYED PERSONS

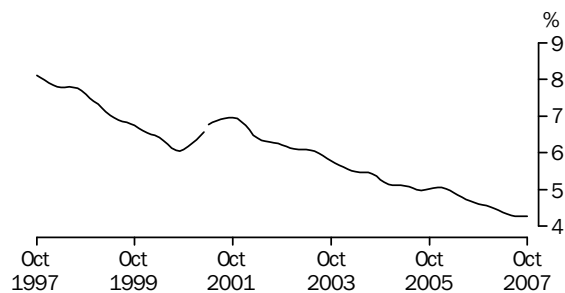
The trend estimate of unemployed persons generally fell from 747,700 in October 1997 to 583,000 in September 2000, before rising to 681,200 in October 2001. The trend has since generally fallen to stand at 471,100 in October 2007.



Series break at April 2001; see paragraph 16 of Explanatory Notes.

UNEMPLOYMENT RATE

The trend unemployment rate generally fell from 8.1% in October 1997 to 6.0% in September 2000. After rising to 7.0% in October 2001, the trend has generally fallen to stand at 4.3% in October 2007.



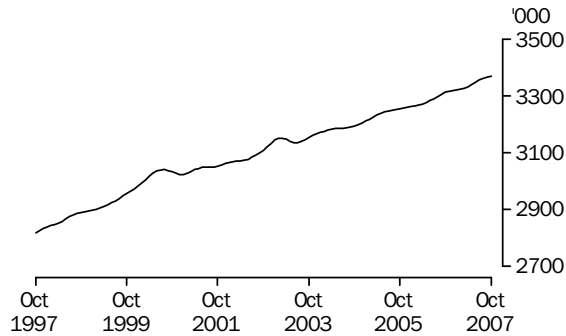
Series break at April 2001; see paragraph 16 of Explanatory Notes.

STATES TREND ESTIMATES

EMPLOYED PERSONS

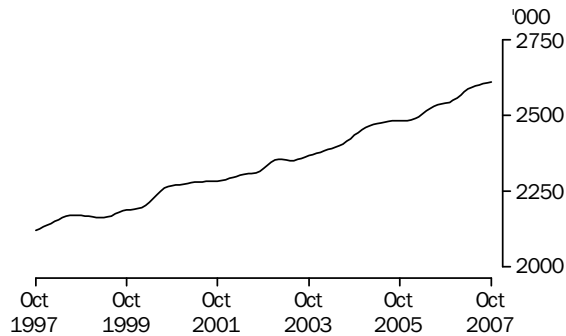
NEW SOUTH WALES

The trend estimate of employed persons in New South Wales steadily rose from 2,817,100 in October 1997 to 3,040,200 in August 2000. Apart from small decreases in late 2000 and early 2003, the trend has since generally risen to stand at 3,369,700 in October 2007.



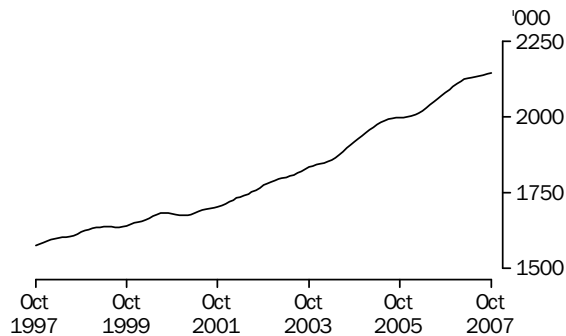
VICTORIA

The trend estimate of employed persons in Victoria generally rose from 2,120,000 in October 1997 to 2,356,100 in February 2003. After falling to 2,349,800 in May 2003, the trend has generally risen to stand at 2,609,000 in October 2007.



QUEENSLAND

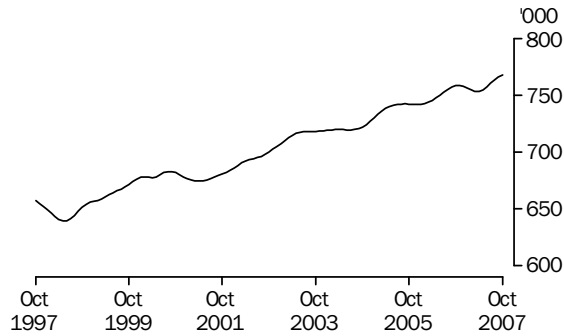
The trend estimate of employed persons in Queensland generally rose from 1,574,700 in October 1997 to 1,683,800 in August 2000. After falling to 1,675,400 in January 2001, the trend has steadily risen to stand at 2,145,100 in October 2007.



STATES TREND ESTIMATES *continued*

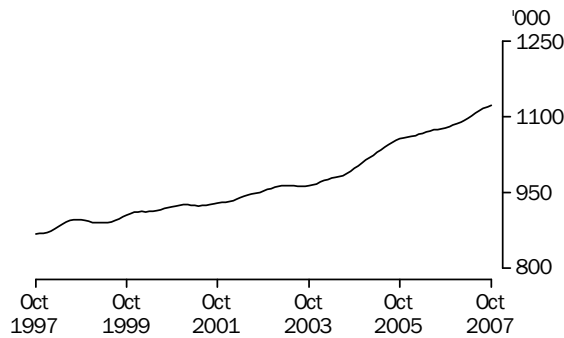
SOUTH AUSTRALIA

The trend estimate of employed persons in South Australia dropped from 657,400 in October 1997 to 639,800 in May 1998, before generally rising to 758,800 in November 2006. After falling to 753,400 in March 2007, the trend has since risen to stand at 767,500 in October 2007.



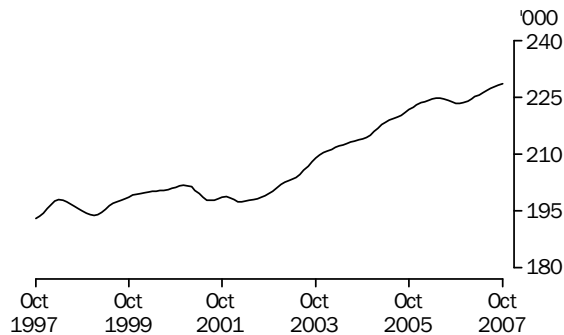
WESTERN AUSTRALIA

The trend estimate of employed persons in Western Australia generally rose from 868,600 in October 1997 to 896,500 in September 1998. After a small decrease to 889,600 in March 1999, the trend has since increased to stand at 1,122,700 in October 2007.



TASMANIA

The trend estimate of employed persons in Tasmania generally rose from 192,900 in October 1997 to 201,800 in December 2000, before falling to 197,400 in March 2002. Apart from a fall in late 2006, the trend has rise to stand at 228,600 in October 2007.



LABOUR FORCE STATUS (AGED 15 YEARS & OVER): Trend

	EMPLOYED			UNEMPLOYED		UNEMPLOYMENT RATE			Participation rate
	Full time	Part time	Total	Looking for f/t work	Total	Labour force	Looking for f/t work	Total	
	'000	'000	'000	'000	'000	'000	%	%	
MALES									
October 2004	4 592.3	801.3	5 393.6	234.2	295.9	5 689.5	4.9	5.2	71.5
October 2005	4 716.6	808.1	5 524.7	228.8	287.5	5 812.2	4.6	4.9	72.0
2006									
October	4 786.7	866.5	5 653.2	208.7	264.7	5 917.9	4.2	4.5	72.2
November	4 796.1	870.0	5 666.0	206.6	261.1	5 927.1	4.1	4.4	72.2
December	4 809.6	870.4	5 680.0	204.4	257.2	5 937.2	4.1	4.3	72.2
2007									
January	4 827.3	868.5	5 695.8	201.7	253.0	5 948.9	4.0	4.3	72.2
February	4 847.6	865.1	5 712.7	198.5	248.7	5 961.4	3.9	4.2	72.2
March	4 868.0	861.6	5 729.6	194.7	244.7	5 974.2	3.8	4.1	72.3
April	4 885.8	860.3	5 746.0	190.4	240.8	5 986.9	3.8	4.0	72.3
May	4 899.8	861.1	5 760.9	186.2	237.7	5 998.5	3.7	4.0	72.4
June	4 910.9	862.5	5 773.4	182.8	235.5	6 008.9	3.6	3.9	72.4
July	4 920.0	862.6	5 782.6	180.3	234.4	6 017.0	3.5	3.9	72.4
August	4 927.9	861.2	5 789.1	178.4	233.9	6 023.0	3.5	3.9	72.3
September	4 934.6	858.8	5 793.4	177.1	233.8	6 027.1	3.5	3.9	72.3
October	4 939.6	855.6	5 795.2	176.5	234.2	6 029.4	3.5	3.9	72.2
FEMALES									
October 2004	2 392.4	1 962.2	4 354.6	151.6	246.8	4 601.4	6.0	5.4	55.9
October 2005	2 436.2	2 067.0	4 503.2	147.6	242.0	4 745.2	5.7	5.1	57.0
2006									
October	2 551.9	2 072.1	4 623.9	145.5	232.0	4 856.0	5.4	4.8	57.6
November	2 557.7	2 073.9	4 631.6	146.5	234.0	4 865.6	5.4	4.8	57.6
December	2 563.0	2 076.7	4 639.7	146.6	236.2	4 875.9	5.4	4.8	57.6
2007									
January	2 568.9	2 079.2	4 648.1	145.7	237.9	4 886.1	5.4	4.9	57.7
February	2 575.4	2 081.2	4 656.5	144.3	238.6	4 895.1	5.3	4.9	57.7
March	2 582.3	2 082.3	4 664.6	143.3	238.3	4 902.9	5.3	4.9	57.7
April	2 587.9	2 084.5	4 672.4	142.7	237.0	4 909.3	5.2	4.8	57.7
May	2 592.1	2 088.8	4 680.9	142.5	235.6	4 916.5	5.2	4.8	57.7
June	2 595.8	2 095.7	4 691.5	142.1	235.0	4 926.4	5.2	4.8	57.8
July	2 599.6	2 103.8	4 703.4	141.2	234.9	4 938.3	5.2	4.8	57.8
August	2 604.3	2 111.3	4 715.5	139.7	235.4	4 950.9	5.1	4.8	57.9
September	2 609.9	2 117.4	4 727.2	137.9	236.2	4 963.4	5.0	4.8	58.0
October	2 616.0	2 120.9	4 736.9	136.4	236.9	4 973.8	5.0	4.8	58.0
PERSONS									
October 2004	6 984.7	2 763.5	9 748.2	385.8	542.7	10 290.8	5.2	5.3	63.6
October 2005	7 152.8	2 875.1	10 027.9	376.4	529.5	10 557.4	5.0	5.0	64.4
2006									
October	7 338.6	2 938.6	10 277.2	354.2	496.8	10 773.9	4.6	4.6	64.8
November	7 353.8	2 943.8	10 297.6	353.1	495.1	10 792.7	4.6	4.6	64.8
December	7 372.6	2 947.1	10 319.7	351.0	493.4	10 813.1	4.5	4.6	64.8
2007									
January	7 396.2	2 947.8	10 344.0	347.4	491.0	10 835.0	4.5	4.5	64.8
February	7 423.0	2 946.3	10 369.3	342.8	487.3	10 856.6	4.4	4.5	64.9
March	7 450.2	2 943.9	10 394.2	337.9	482.9	10 877.1	4.3	4.4	64.9
April	7 473.6	2 944.8	10 418.4	333.1	477.8	10 896.2	4.3	4.4	64.9
May	7 491.8	2 950.0	10 441.8	328.7	473.3	10 915.1	4.2	4.3	64.9
June	7 506.7	2 958.1	10 464.8	324.9	470.5	10 935.3	4.1	4.3	65.0
July	7 519.6	2 966.4	10 486.0	321.5	469.3	10 955.3	4.1	4.3	65.0
August	7 532.1	2 972.5	10 504.6	318.1	469.3	10 973.9	4.1	4.3	65.0
September	7 544.5	2 976.1	10 520.6	315.1	470.0	10 990.6	4.0	4.3	65.0
October	7 555.6	2 976.4	10 532.1	312.9	471.1	11 003.2	4.0	4.3	65.0

LABOUR FORCE STATUS (AGED 15 YEARS & OVER): Seasonally Adjusted

	EMPLOYED			UNEMPLOYED		UNEMPLOYMENT RATE			Participation rate
	Full time	Part time	Total	Looking for f/t work	Total	Labour force	Looking for f/t work	Total	
	'000	'000	'000	'000	'000	'000	%	%	
MALES									
October 2004	4 595.0	798.6	5 393.7	223.0	287.0	5 680.6	4.6	5.1	71.4
October 2005	4 699.7	814.5	5 514.2	230.0	287.5	5 801.7	4.7	5.0	71.9
2006									
October	4 767.3	872.9	5 640.2	200.2	255.3	5 895.5	4.0	4.3	71.9
November	4 790.4	869.7	5 660.1	206.3	261.7	5 921.8	4.1	4.4	72.1
December	4 810.5	884.0	5 694.5	203.3	253.3	5 947.8	4.1	4.3	72.3
2007									
January	4 828.8	863.1	5 691.9	203.5	253.8	5 945.7	4.0	4.3	72.2
February	4 847.9	862.7	5 710.6	200.5	252.2	5 962.8	4.0	4.2	72.3
March	4 868.8	857.3	5 726.1	195.1	247.5	5 973.6	3.9	4.1	72.3
April	4 886.1	860.6	5 746.7	189.7	236.7	5 983.3	3.7	4.0	72.3
May	4 906.2	856.6	5 762.8	181.9	234.2	5 997.0	3.6	3.9	72.3
June	4 909.9	867.8	5 777.7	186.8	237.8	6 015.5	3.7	4.0	72.5
July	4 922.2	859.6	5 781.8	179.9	233.2	6 015.0	3.5	3.9	72.4
August	4 927.2	868.2	5 795.3	175.8	237.3	6 032.7	3.4	3.9	72.5
September	4 930.2	867.4	5 797.6	174.6	227.4	6 025.0	3.4	3.8	72.3
October	4 944.3	838.0	5 782.3	181.0	238.8	6 021.1	3.5	4.0	72.1
FEMALES									
October 2004	2 402.2	1 966.6	4 368.9	152.5	243.5	4 612.3	6.0	5.3	56.0
October 2005	2 426.0	2 077.7	4 503.6	148.8	246.7	4 750.3	5.8	5.2	57.1
2006									
October	2 544.8	2 068.0	4 612.7	144.9	227.5	4 840.2	5.4	4.7	57.4
November	2 557.8	2 065.5	4 623.3	146.5	232.6	4 855.9	5.4	4.8	57.5
December	2 572.0	2 076.1	4 648.0	150.4	242.8	4 890.8	5.5	5.0	57.8
2007									
January	2 563.5	2 089.6	4 653.1	147.8	232.5	4 885.6	5.4	4.8	57.7
February	2 568.6	2 091.4	4 660.0	141.1	244.9	4 904.9	5.2	5.0	57.8
March	2 585.2	2 068.3	4 653.6	142.5	236.6	4 890.2	5.2	4.8	57.6
April	2 576.3	2 094.6	4 670.9	138.8	238.6	4 909.4	5.1	4.9	57.7
May	2 623.7	2 068.2	4 691.9	144.8	232.3	4 924.2	5.2	4.7	57.8
June	2 584.1	2 101.8	4 686.0	143.6	234.4	4 920.4	5.3	4.8	57.7
July	2 588.3	2 110.0	4 698.3	143.6	235.7	4 934.0	5.3	4.8	57.8
August	2 612.9	2 104.3	4 717.2	140.1	234.7	4 952.0	5.1	4.7	57.9
September	2 586.9	2 136.4	4 723.3	134.3	235.3	4 958.6	4.9	4.7	57.9
October	2 643.4	2 108.1	4 751.5	135.3	239.7	4 991.2	4.9	4.8	58.2
PERSONS									
October 2004	6 997.2	2 765.3	9 762.5	375.4	530.4	10 292.9	5.1	5.2	63.6
October 2005	7 125.7	2 892.2	10 017.8	378.8	534.2	10 552.0	5.0	5.1	64.4
2006									
October	7 312.1	2 940.8	10 253.0	345.1	482.8	10 735.7	4.5	4.5	64.6
November	7 348.2	2 935.3	10 283.4	352.8	494.3	10 777.7	4.6	4.6	64.7
December	7 382.5	2 960.1	10 342.6	353.6	496.1	10 838.7	4.6	4.6	64.9
2007									
January	7 392.3	2 952.7	10 345.0	351.3	486.3	10 831.3	4.5	4.5	64.8
February	7 416.5	2 954.1	10 370.6	341.6	497.1	10 867.7	4.4	4.6	64.9
March	7 454.0	2 925.7	10 379.7	337.6	484.1	10 863.8	4.3	4.5	64.8
April	7 462.3	2 955.2	10 417.5	328.5	475.2	10 892.8	4.2	4.4	64.9
May	7 529.9	2 924.8	10 454.7	326.7	466.5	10 921.2	4.2	4.3	65.0
June	7 494.0	2 969.7	10 463.6	330.4	472.3	10 935.9	4.2	4.3	65.0
July	7 510.5	2 969.6	10 480.0	323.5	468.9	10 949.0	4.1	4.3	65.0
August	7 540.1	2 972.5	10 512.6	315.9	472.0	10 984.6	4.0	4.3	65.1
September	7 517.1	3 003.8	10 520.9	308.9	462.8	10 983.7	3.9	4.2	65.0
October	7 587.7	2 946.1	10 533.8	316.3	478.5	11 012.3	4.0	4.3	65.0

LABOUR FORCE STATUS (AGED 15 YEARS & OVER): Original

	EMPLOYED			UNEMPLOYED			UNEMPLOYMENT RATE			Participation rate	
	Full time	Part time	Total	Looking for f/t work	Total	Labour force	Not in labour force	Civilian population aged 15 years and over	Looking for f/t work		Total
	'000	'000	'000	'000	'000	'000	'000	'000	%		%
MALES											
October 2004	4 588.8	816.9	5 405.7	213.5	273.7	5 679.4	2 279.7	7 959.1	4.4	4.8	71.4
October 2005	4 690.7	835.6	5 526.3	220.6	274.9	5 801.2	2 268.0	8 069.2	4.5	4.7	71.9
2006											
October	4 755.9	897.2	5 653.1	192.4	244.8	5 897.9	2 296.6	8 194.5	3.9	4.1	72.0
November	4 781.1	855.0	5 636.0	194.7	242.4	5 878.4	2 331.8	8 210.3	3.9	4.1	71.6
December	4 876.2	886.0	5 762.2	197.9	249.2	6 011.4	2 214.6	8 226.1	3.9	4.1	73.1
2007											
January	4 817.1	824.7	5 641.9	230.4	283.5	5 925.4	2 313.4	8 238.8	4.6	4.8	71.9
February	4 870.8	828.9	5 699.7	221.6	280.6	5 980.3	2 271.3	8 251.6	4.4	4.7	72.5
March	4 862.3	871.7	5 734.0	192.8	252.2	5 986.2	2 278.0	8 264.3	3.8	4.2	72.4
April	4 864.0	882.7	5 746.7	191.4	241.2	5 987.9	2 288.7	8 276.6	3.8	4.0	72.3
May	4 891.3	862.6	5 753.8	182.2	236.0	5 989.8	2 299.4	8 289.2	3.6	3.9	72.3
June	4 883.3	893.3	5 776.5	185.5	231.1	6 007.6	2 294.0	8 301.6	3.7	3.8	72.4
July	4 931.0	861.7	5 792.6	165.7	210.9	6 003.6	2 310.1	8 313.6	3.3	3.5	72.2
August	4 883.6	866.1	5 749.7	167.8	225.0	5 974.7	2 351.1	8 325.8	3.3	3.8	71.8
September	4 966.8	859.4	5 826.2	176.2	232.8	6 059.1	2 278.8	8 337.9	3.4	3.8	72.7
October	4 930.5	862.7	5 793.2	174.2	229.5	6 022.7	2 329.3	8 352.0	3.4	3.8	72.1
FEMALES											
October 2004	2 392.9	1 981.3	4 374.2	138.7	224.4	4 598.6	3 632.2	8 230.8	5.5	4.9	55.9
October 2005	2 413.7	2 095.4	4 509.1	134.4	225.8	4 734.9	3 591.1	8 326.0	5.3	4.8	56.9
2006											
October	2 529.3	2 086.5	4 615.8	130.8	207.8	4 823.6	3 613.0	8 436.6	4.9	4.3	57.2
November	2 563.5	2 063.3	4 626.8	133.5	208.1	4 834.9	3 615.1	8 450.0	4.9	4.3	57.2
December	2 630.6	2 075.6	4 706.2	151.6	242.5	4 948.7	3 514.5	8 463.2	5.4	4.9	58.5
2007											
January	2 564.2	2 006.4	4 570.5	171.5	254.4	4 825.0	3 649.1	8 474.1	6.3	5.3	56.9
February	2 589.7	2 038.3	4 628.0	167.3	286.9	4 914.9	3 570.2	8 485.0	6.1	5.8	57.9
March	2 559.4	2 098.9	4 658.3	151.3	259.3	4 917.7	3 578.3	8 495.9	5.6	5.3	57.9
April	2 542.4	2 114.6	4 657.1	140.3	243.5	4 900.6	3 606.7	8 507.3	5.2	5.0	57.6
May	2 587.6	2 109.8	4 697.4	142.7	230.4	4 927.8	3 590.9	8 518.7	5.2	4.7	57.8
June	2 565.4	2 131.4	4 696.8	140.7	228.8	4 925.5	3 604.5	8 530.1	5.2	4.6	57.7
July	2 593.9	2 101.4	4 695.3	132.9	215.7	4 911.1	3 630.8	8 541.9	4.9	4.4	57.5
August	2 574.2	2 111.9	4 686.1	127.9	222.6	4 908.7	3 645.2	8 553.9	4.7	4.5	57.4
September	2 650.2	2 135.3	4 785.5	128.6	232.6	5 018.1	3 547.6	8 565.7	4.6	4.6	58.6
October	2 625.2	2 127.3	4 752.6	122.4	219.8	4 972.4	3 607.3	8 579.7	4.5	4.4	58.0
PERSONS											
October 2004	6 981.7	2 798.2	9 779.9	352.1	498.1	10 278.0	5 912.0	16 190.0	4.8	4.8	63.5
October 2005	7 104.4	2 931.0	10 035.4	355.0	500.7	10 536.1	5 859.1	16 395.3	4.8	4.8	64.3
2006											
October	7 285.2	2 983.7	10 268.9	323.2	452.6	10 721.5	5 909.6	16 631.1	4.2	4.2	64.5
November	7 344.6	2 918.2	10 262.8	328.2	450.5	10 713.3	5 946.9	16 660.2	4.3	4.2	64.3
December	7 506.8	2 961.6	10 468.4	349.5	491.7	10 960.1	5 729.2	16 689.3	4.4	4.5	65.7
2007											
January	7 381.3	2 831.1	10 212.4	401.9	538.0	10 750.4	5 962.5	16 712.8	5.2	5.0	64.3
February	7 460.5	2 867.2	10 327.7	388.8	567.5	10 895.2	5 841.4	16 736.6	5.0	5.2	65.1
March	7 421.7	2 970.7	10 392.4	344.1	511.5	10 903.9	5 856.3	16 760.2	4.4	4.7	65.1
April	7 406.4	2 997.3	10 403.7	331.8	484.8	10 888.5	5 895.4	16 783.9	4.3	4.5	64.9
May	7 478.9	2 972.4	10 451.2	324.9	466.4	10 917.6	5 890.3	16 807.9	4.2	4.3	65.0
June	7 448.6	3 024.7	10 473.3	326.2	459.8	10 933.1	5 898.5	16 831.6	4.2	4.2	65.0
July	7 524.9	2 963.1	10 488.0	298.6	426.6	10 914.6	5 940.9	16 855.5	3.8	3.9	64.8
August	7 457.8	2 978.0	10 435.8	295.8	447.7	10 883.4	5 996.3	16 879.7	3.8	4.1	64.5
September	7 616.9	2 994.7	10 611.7	304.8	465.5	11 077.1	5 826.5	16 903.6	3.8	4.2	65.5
October	7 555.7	2 990.1	10 545.8	296.7	449.3	10 995.1	5 936.6	16 931.7	3.8	4.1	64.9

LABOUR FORCE STATUS (AGED 15 YEARS & OVER)—New South Wales

	TREND					SEASONALLY ADJUSTED					
	Employed full time	Total employed	Total unemployed	Unemployment rate	Participation rate	Employed full time	Total employed	Total unemployed	Unemployment rate	Participation rate	Civilian population aged 15 years and over
	'000	'000	'000	%	%	'000	'000	'000	%	%	'000
MALES											
October 2004	1 512.8	1 775.9	95.5	5.1	70.2	1 509.4	1 769.7	90.1	4.8	69.8	2 665.5
October 2005	1 532.5	1 791.0	103.2	5.4	70.4	1 528.3	1 791.3	104.2	5.5	70.5	2 689.8
2006											
October	1 537.3	1 831.1	96.3	5.0	70.9	1 533.7	1 830.2	97.7	5.1	71.0	2 717.1
November	1 539.5	1 834.5	93.6	4.9	70.9	1 539.3	1 832.8	94.5	4.9	70.8	2 720.9
December	1 544.0	1 837.0	90.9	4.7	70.8	1 542.0	1 847.0	85.0	4.4	70.9	2 724.8
2007											
January	1 550.4	1 839.4	88.7	4.6	70.7	1 550.4	1 834.2	87.9	4.6	70.5	2 727.7
February	1 557.7	1 842.3	87.2	4.5	70.7	1 560.7	1 839.8	92.3	4.8	70.8	2 730.7
March	1 564.6	1 845.6	86.3	4.5	70.7	1 560.9	1 843.4	84.1	4.4	70.5	2 733.6
April	1 569.8	1 849.6	85.7	4.4	70.7	1 572.9	1 851.2	85.9	4.4	70.8	2 736.5
May	1 573.3	1 854.0	84.9	4.4	70.8	1 578.2	1 854.5	84.0	4.3	70.8	2 739.5
June	1 575.8	1 858.0	84.0	4.3	70.8	1 575.6	1 859.7	84.8	4.4	70.9	2 742.4
July	1 578.1	1 861.2	83.1	4.3	70.8	1 575.0	1 862.2	83.4	4.3	70.9	2 745.4
August	1 580.9	1 863.6	82.3	4.2	70.8	1 578.5	1 862.5	82.7	4.2	70.8	2 748.5
September	1 583.9	1 865.5	81.5	4.2	70.8	1 579.7	1 866.2	80.3	4.1	70.7	2 751.5
October	1 586.5	1 866.6	80.7	4.1	70.7	1 596.3	1 865.7	80.6	4.1	70.6	2 755.0
FEMALES											
October 2004	809.8	1 417.4	78.2	5.2	54.3	812.7	1 419.4	81.0	5.4	54.5	2 752.9
October 2005	808.5	1 463.5	75.5	4.9	55.5	798.3	1 457.3	76.4	5.0	55.3	2 775.2
2006											
October	840.9	1 480.8	77.6	5.0	55.6	844.3	1 478.2	68.1	4.4	55.2	2 802.1
November	841.2	1 481.9	79.7	5.1	55.7	841.1	1 477.1	79.7	5.1	55.5	2 805.5
December	839.9	1 482.2	82.5	5.3	55.7	841.9	1 495.4	86.6	5.5	56.3	2 808.7
2007											
January	837.8	1 481.6	85.5	5.5	55.7	838.1	1 482.9	84.9	5.4	55.8	2 811.4
February	835.8	1 480.9	87.6	5.6	55.7	835.9	1 476.4	88.2	5.6	55.6	2 814.0
March	835.2	1 481.1	88.5	5.6	55.7	830.1	1 476.2	88.2	5.6	55.5	2 816.6
April	835.8	1 482.4	87.7	5.6	55.7	828.3	1 474.8	90.9	5.8	55.5	2 819.5
May	837.2	1 485.1	85.9	5.5	55.7	849.7	1 495.3	87.1	5.5	56.1	2 822.4
June	838.9	1 489.1	84.3	5.4	55.7	837.1	1 493.6	79.9	5.1	55.7	2 825.2
July	840.0	1 493.2	82.9	5.3	55.7	837.8	1 487.6	82.4	5.2	55.5	2 828.2
August	840.6	1 496.8	82.1	5.2	55.8	843.6	1 492.8	82.3	5.2	55.6	2 831.2
September	840.9	1 500.2	81.8	5.2	55.8	837.2	1 502.8	81.7	5.2	55.9	2 834.2
October	840.9	1 503.1	81.6	5.1	55.9	841.9	1 506.7	83.7	5.3	56.0	2 837.7
PERSONS											
October 2004	2 322.6	3 193.3	173.6	5.2	62.1	2 322.1	3 189.1	171.1	5.1	62.0	5 418.4
October 2005	2 341.0	3 254.5	178.7	5.2	62.8	2 326.5	3 248.5	180.6	5.3	62.7	5 465.0
2006											
October	2 378.2	3 311.9	173.9	5.0	63.2	2 378.0	3 308.5	165.8	4.8	62.9	5 519.3
November	2 380.7	3 316.4	173.3	5.0	63.1	2 380.4	3 309.8	174.2	5.0	63.0	5 526.4
December	2 383.9	3 319.2	173.4	5.0	63.1	2 383.9	3 342.5	171.7	4.9	63.5	5 533.5
2007											
January	2 388.2	3 321.0	174.2	5.0	63.1	2 388.5	3 317.2	172.8	5.0	63.0	5 539.1
February	2 393.6	3 323.2	174.8	5.0	63.1	2 396.7	3 316.1	180.5	5.2	63.1	5 544.6
March	2 399.7	3 326.7	174.8	5.0	63.1	2 391.0	3 319.6	172.2	4.9	62.9	5 550.2
April	2 405.6	3 332.0	173.3	4.9	63.1	2 401.2	3 326.0	176.8	5.0	63.0	5 556.0
May	2 410.5	3 339.1	170.8	4.9	63.1	2 427.9	3 349.8	171.1	4.9	63.3	5 561.8
June	2 414.6	3 347.2	168.2	4.8	63.1	2 412.7	3 353.3	164.7	4.7	63.2	5 567.6
July	2 418.1	3 354.4	166.0	4.7	63.2	2 412.8	3 349.8	165.8	4.7	63.1	5 573.6
August	2 421.4	3 360.4	164.4	4.7	63.2	2 422.1	3 355.3	165.0	4.7	63.1	5 579.7
September	2 424.8	3 365.6	163.3	4.6	63.2	2 416.9	3 369.1	162.0	4.6	63.2	5 585.8
October	2 427.4	3 369.7	162.3	4.6	63.2	2 438.2	3 372.5	164.4	4.6	63.2	5 592.6

LABOUR FORCE STATUS (AGED 15 YEARS & OVER)—Victoria

	TREND					SEASONALLY ADJUSTED					
	<i>Employed full time</i>	<i>Total employed</i>	<i>Total unemp-loyed</i>	<i>Unemp-loyment rate</i>	<i>Partici-pation rate</i>	<i>Employed full time</i>	<i>Total employed</i>	<i>Total unemp-loyed</i>	<i>Unemp-loyment rate</i>	<i>Partici-pation rate</i>	<i>Civilian population aged 15 years and over</i>
	'000	'000	'000	%	%	'000	'000	'000	%	%	'000
MALES											
October 2004	1 139.0	1 340.9	80.5	5.7	72.2	1 136.3	1 341.2	80.4	5.7	72.2	1 969.5
October 2005	1 166.2	1 370.2	71.7	5.0	72.2	1 167.2	1 372.6	71.9	5.0	72.4	1 996.2
2006											
October	1 175.4	1 397.5	66.8	4.6	72.3	1 171.6	1 397.4	67.5	4.6	72.3	2 024.9
November	1 176.1	1 399.4	66.5	4.5	72.3	1 170.2	1 394.4	63.7	4.4	71.9	2 028.6
December	1 178.0	1 402.1	66.5	4.5	72.3	1 177.6	1 403.6	69.4	4.7	72.5	2 032.5
2007											
January	1 182.0	1 406.2	66.5	4.5	72.3	1 179.7	1 402.6	66.6	4.5	72.2	2 035.8
February	1 188.0	1 411.3	66.0	4.5	72.4	1 190.3	1 414.1	65.5	4.4	72.6	2 039.0
March	1 194.7	1 416.8	64.9	4.4	72.5	1 194.7	1 416.3	66.1	4.5	72.6	2 042.3
April	1 200.7	1 422.1	63.6	4.3	72.6	1 199.8	1 421.7	62.9	4.2	72.6	2 045.6
May	1 204.9	1 426.2	62.3	4.2	72.7	1 208.6	1 429.0	63.1	4.2	72.8	2 048.8
June	1 207.6	1 429.1	61.1	4.1	72.6	1 210.3	1 428.5	58.1	3.9	72.4	2 052.0
July	1 209.6	1 431.1	60.0	4.0	72.6	1 210.7	1 432.0	59.7	4.0	72.6	2 054.5
August	1 211.3	1 432.5	59.0	4.0	72.5	1 201.5	1 432.1	64.5	4.3	72.8	2 057.1
September	1 212.8	1 433.6	58.1	3.9	72.4	1 219.2	1 434.9	54.1	3.6	72.3	2 059.6
October	1 213.9	1 434.0	57.4	3.8	72.3	1 213.9	1 431.7	57.4	3.9	72.2	2 063.0
FEMALES											
October 2004	586.3	1 092.9	67.3	5.8	56.1	581.5	1 093.5	64.9	5.6	56.0	2 066.8
October 2005	600.1	1 112.4	67.0	5.7	56.4	606.0	1 121.5	67.0	5.6	56.9	2 089.6
2006											
October	613.7	1 141.8	61.2	5.1	56.8	599.7	1 140.7	61.3	5.1	56.8	2 116.9
November	616.6	1 143.4	62.1	5.1	56.9	614.0	1 138.5	62.4	5.2	56.6	2 120.2
December	620.2	1 146.7	63.0	5.2	57.0	621.8	1 145.3	63.1	5.2	56.9	2 123.6
2007											
January	624.5	1 151.3	64.0	5.3	57.2	629.8	1 151.9	65.1	5.4	57.2	2 126.4
February	628.6	1 156.4	64.7	5.3	57.3	623.1	1 157.9	63.9	5.2	57.4	2 129.3
March	631.8	1 160.9	65.1	5.3	57.5	638.5	1 158.6	65.1	5.3	57.4	2 132.2
April	633.7	1 164.2	65.2	5.3	57.6	629.2	1 172.9	65.2	5.3	58.0	2 135.1
May	634.1	1 166.1	64.8	5.3	57.6	637.9	1 165.3	64.2	5.2	57.5	2 137.9
June	634.6	1 167.6	64.1	5.2	57.5	633.8	1 160.8	67.6	5.5	57.4	2 140.8
July	635.2	1 169.3	63.2	5.1	57.5	631.2	1 170.2	59.4	4.8	57.4	2 143.4
August	636.0	1 171.3	62.3	5.0	57.5	639.5	1 173.9	64.8	5.2	57.7	2 146.1
September	636.8	1 173.4	61.3	5.0	57.5	632.8	1 170.7	59.9	4.9	57.3	2 148.7
October	638.2	1 175.0	60.5	4.9	57.4	642.0	1 179.1	60.1	4.8	57.6	2 152.0
PERSONS											
October 2004	1 725.3	2 433.7	147.7	5.7	64.0	1 717.8	2 434.7	145.2	5.6	63.9	4 036.3
October 2005	1 766.3	2 482.6	138.7	5.3	64.2	1 773.2	2 494.1	138.9	5.3	64.4	4 085.8
2006											
October	1 789.1	2 539.3	128.0	4.8	64.4	1 771.4	2 538.1	128.8	4.8	64.4	4 141.8
November	1 792.8	2 542.9	128.6	4.8	64.4	1 784.2	2 532.9	126.2	4.7	64.1	4 148.9
December	1 798.3	2 548.8	129.6	4.8	64.5	1 799.4	2 548.9	132.5	4.9	64.5	4 156.0
2007											
January	1 806.5	2 557.5	130.6	4.9	64.6	1 809.5	2 554.5	131.7	4.9	64.5	4 162.2
February	1 816.6	2 567.6	130.7	4.8	64.7	1 813.4	2 572.0	129.4	4.8	64.8	4 168.3
March	1 826.6	2 577.7	130.0	4.8	64.9	1 833.2	2 574.9	131.2	4.8	64.8	4 174.5
April	1 834.4	2 586.2	128.7	4.7	64.9	1 829.0	2 594.6	128.2	4.7	65.1	4 180.6
May	1 839.0	2 592.3	127.1	4.7	65.0	1 846.5	2 594.2	127.3	4.7	65.0	4 186.7
June	1 842.2	2 596.7	125.2	4.6	64.9	1 844.1	2 589.3	125.7	4.6	64.8	4 192.8
July	1 844.8	2 600.4	123.3	4.5	64.9	1 841.9	2 602.2	119.1	4.4	64.8	4 198.0
August	1 847.3	2 603.8	121.3	4.5	64.8	1 841.0	2 606.0	129.2	4.7	65.1	4 203.2
September	1 849.6	2 607.0	119.4	4.4	64.8	1 852.1	2 605.6	114.0	4.2	64.6	4 208.3
October	1 852.1	2 609.0	117.9	4.3	64.7	1 855.9	2 610.8	117.5	4.3	64.7	4 215.0

LABOUR FORCE STATUS (AGED 15 YEARS & OVER)—Queensland

	TREND					SEASONALLY ADJUSTED					
	Employed full time	Total employed	Total unemployed	Unemployment rate	Participation rate	Employed full time	Total employed	Total unemployed	Unemployment rate	Participation rate	Civilian population aged 15 years and over
	'000	'000	'000	%	%	'000	'000	'000	%	%	'000
MALES											
October 2004	909.4	1 060.2	53.0	4.8	72.8	920.7	1 070.3	49.5	4.4	73.2	1 529.7
October 2005	945.5	1 100.4	50.7	4.4	73.5	946.1	1 101.2	51.0	4.4	73.6	1 564.9
2006											
October	973.2	1 135.9	46.1	3.9	73.6	966.4	1 133.0	40.5	3.4	73.1	1 604.7
November	978.9	1 142.8	45.0	3.8	73.8	978.0	1 141.1	47.3	4.0	73.8	1 609.3
December	985.7	1 150.0	43.8	3.7	74.0	988.2	1 154.1	41.6	3.5	74.1	1 613.9
2007											
January	992.7	1 156.8	42.7	3.6	74.2	995.8	1 160.7	43.4	3.6	74.4	1 617.3
February	999.0	1 162.3	41.6	3.5	74.3	993.8	1 159.8	40.7	3.4	74.1	1 620.9
March	1 004.1	1 166.1	40.5	3.4	74.3	1 008.2	1 165.1	43.5	3.6	74.4	1 624.4
April	1 007.6	1 168.5	39.1	3.2	74.2	1 007.5	1 168.8	38.1	3.2	74.1	1 627.7
May	1 009.5	1 170.0	37.8	3.1	74.0	1 012.2	1 172.3	37.4	3.1	74.2	1 631.2
June	1 010.7	1 171.3	37.3	3.1	73.9	1 009.1	1 171.7	37.4	3.1	74.0	1 634.6
July	1 011.5	1 172.5	37.5	3.1	73.9	1 008.4	1 169.6	35.4	2.9	73.6	1 638.1
August	1 012.1	1 173.6	38.3	3.2	73.8	1 015.8	1 173.2	36.3	3.0	73.7	1 641.6
September	1 012.7	1 174.6	39.4	3.2	73.8	1 010.7	1 176.1	41.3	3.4	74.0	1 645.1
October	1 013.3	1 175.4	40.8	3.4	73.8	1 014.2	1 176.1	43.6	3.6	74.0	1 648.9
FEMALES											
October 2004	480.6	857.9	47.3	5.2	57.7	483.1	867.7	43.5	4.8	58.0	1 570.0
October 2005	485.5	897.4	49.9	5.3	59.2	483.1	896.3	51.9	5.5	59.2	1 600.6
2006											
October	533.2	944.3	45.5	4.6	60.6	531.3	940.5	44.1	4.5	60.3	1 633.4
November	535.3	947.3	45.5	4.6	60.6	536.7	944.2	44.0	4.5	60.4	1 637.2
December	537.4	949.9	45.5	4.6	60.7	540.7	946.2	45.7	4.6	60.4	1 640.9
2007											
January	540.1	952.6	45.1	4.5	60.7	530.7	954.8	44.6	4.5	60.8	1 643.9
February	543.4	955.3	44.1	4.4	60.7	544.1	956.0	49.2	4.9	61.0	1 646.9
March	546.5	957.4	42.8	4.3	60.6	546.2	959.1	44.5	4.4	60.8	1 649.9
April	548.3	958.5	41.6	4.2	60.5	554.4	961.6	37.0	3.7	60.4	1 653.0
May	548.4	959.0	40.9	4.1	60.4	550.6	955.6	37.7	3.8	60.0	1 656.2
June	547.3	959.9	41.1	4.1	60.3	548.1	960.1	40.9	4.1	60.3	1 659.3
July	545.9	961.8	41.9	4.2	60.4	541.0	958.6	45.6	4.5	60.4	1 662.8
August	545.1	964.3	42.7	4.2	60.4	544.1	963.3	42.7	4.2	60.4	1 666.4
September	545.2	967.1	43.4	4.3	60.5	539.7	969.6	44.1	4.3	60.7	1 669.9
October	545.5	969.7	44.1	4.3	60.6	555.2	973.2	42.1	4.1	60.7	1 673.8
PERSONS											
October 2004	1 390.0	1 918.1	100.3	5.0	65.1	1 403.8	1 938.0	93.0	4.6	65.5	3 099.7
October 2005	1 431.0	1 997.8	100.6	4.8	66.3	1 429.2	1 997.5	103.0	4.9	66.4	3 165.5
2006											
October	1 506.4	2 080.2	91.7	4.2	67.1	1 497.7	2 073.5	84.6	3.9	66.6	3 238.1
November	1 514.2	2 090.0	90.5	4.1	67.2	1 514.6	2 085.3	91.4	4.2	67.0	3 246.5
December	1 523.0	2 099.8	89.4	4.1	67.3	1 528.9	2 100.2	87.4	4.0	67.2	3 254.8
2007											
January	1 532.8	2 109.3	87.8	4.0	67.4	1 526.4	2 115.5	88.0	4.0	67.6	3 261.2
February	1 542.4	2 117.6	85.8	3.9	67.4	1 538.0	2 115.8	90.0	4.1	67.5	3 267.9
March	1 550.6	2 123.5	83.3	3.8	67.4	1 554.4	2 124.2	88.0	4.0	67.6	3 274.3
April	1 555.9	2 127.0	80.6	3.7	67.3	1 561.9	2 130.4	75.2	3.4	67.2	3 280.8
May	1 557.9	2 129.0	78.8	3.6	67.2	1 562.8	2 127.8	75.1	3.4	67.0	3 287.4
June	1 558.0	2 131.2	78.4	3.5	67.1	1 557.2	2 131.8	78.3	3.5	67.1	3 293.9
July	1 557.3	2 134.3	79.4	3.6	67.1	1 549.3	2 128.1	81.0	3.7	66.9	3 300.9
August	1 557.3	2 137.9	81.0	3.7	67.1	1 559.9	2 136.5	78.9	3.6	67.0	3 308.0
September	1 557.9	2 141.7	82.8	3.7	67.1	1 550.4	2 145.7	85.4	3.8	67.3	3 315.0
October	1 558.9	2 145.1	84.9	3.8	67.2	1 569.3	2 149.3	85.8	3.8	67.3	3 322.7

LABOUR FORCE STATUS (AGED 15 YEARS & OVER)—South Australia

	TREND					SEASONALLY ADJUSTED					Civilian population aged 15 years and over '000
	Employed full time	Total employed	Total unemp-loyed	Unemp-loyment rate	Partici-pation rate	Employed full time	Total employed	Total unemp-loyed	Unemp-loyment rate	Partici-pation rate	
	'000	'000	'000	%	%	'000	'000	'000	%	%	
MALES											
October 2004	335.5	399.7	25.3	6.0	69.2	337.0	400.9	25.3	5.9	69.4	614.1
October 2005	343.0	406.4	22.8	5.3	69.3	343.1	406.5	23.7	5.5	69.5	619.0
2006											
October	346.7	412.5	21.3	4.9	69.4	348.1	416.4	18.2	4.2	69.5	625.0
November	345.8	411.6	22.5	5.2	69.4	344.7	409.4	23.2	5.4	69.1	625.8
December	344.3	410.5	23.5	5.4	69.3	342.0	410.3	25.1	5.8	69.5	626.5
2007											
January	343.1	409.6	24.0	5.5	69.1	342.6	409.3	25.4	5.9	69.3	627.1
February	342.3	409.1	23.9	5.5	69.0	342.8	410.3	23.4	5.4	69.1	627.8
March	342.2	409.3	23.5	5.4	68.9	344.2	405.6	23.2	5.4	68.2	628.4
April	342.8	410.1	22.7	5.3	68.8	340.2	410.8	22.4	5.2	68.9	629.1
May	343.5	411.2	22.1	5.1	68.8	343.6	413.7	21.3	4.9	69.1	629.7
June	344.2	412.2	21.9	5.0	68.9	344.8	412.3	22.0	5.1	68.9	630.4
July	344.7	413.1	21.9	5.0	68.9	344.5	409.9	23.3	5.4	68.6	631.1
August	345.1	413.7	22.1	5.1	69.0	347.0	417.5	21.2	4.8	69.4	631.8
September	345.2	414.1	22.3	5.1	69.0	345.0	413.2	20.0	4.6	68.5	632.5
October	345.3	414.1	22.7	5.2	69.0	343.4	413.4	25.3	5.8	69.3	633.3
FEMALES											
October 2004	161.6	322.1	18.1	5.3	53.4	162.4	322.0	18.5	5.4	53.4	637.5
October 2005	169.9	335.8	14.4	4.1	54.6	164.8	335.5	14.3	4.1	54.6	641.0
2006											
October	175.1	346.1	18.3	5.0	56.3	172.9	344.7	18.1	5.0	56.1	646.8
November	174.8	347.2	18.3	5.0	56.4	175.9	349.4	19.0	5.2	56.9	647.6
December	174.5	347.3	18.1	5.0	56.4	175.2	348.8	18.9	5.1	56.7	648.4
2007											
January	174.3	346.6	17.9	4.9	56.2	172.7	347.0	17.5	4.8	56.2	649.0
February	174.1	345.4	17.6	4.8	55.9	177.1	346.5	16.6	4.6	55.9	649.6
March	173.9	344.1	17.2	4.8	55.6	171.7	341.2	17.1	4.8	55.1	650.2
April	173.8	343.3	16.9	4.7	55.3	172.8	342.3	18.6	5.1	55.4	650.9
May	174.2	343.6	16.7	4.6	55.3	176.7	344.5	16.1	4.5	55.4	651.5
June	175.3	345.1	16.7	4.6	55.5	174.2	345.2	16.6	4.6	55.5	652.2
July	177.0	347.1	16.8	4.6	55.7	175.0	345.2	16.0	4.4	55.3	652.8
August	179.0	349.3	17.0	4.6	56.1	177.5	349.6	17.1	4.7	56.1	653.5
September	181.1	351.5	17.3	4.7	56.4	183.5	352.4	17.5	4.7	56.6	654.2
October	182.9	353.4	17.6	4.7	56.7	185.1	355.3	18.4	4.9	57.1	655.0
PERSONS											
October 2004	497.1	721.8	43.5	5.7	61.1	499.3	722.9	43.8	5.7	61.3	1 251.6
October 2005	512.9	742.2	37.2	4.8	61.9	507.9	742.0	38.0	4.9	61.9	1 260.0
2006											
October	521.8	758.7	39.6	5.0	62.8	521.0	761.2	36.3	4.6	62.7	1 271.8
November	520.5	758.8	40.8	5.1	62.8	520.6	758.7	42.2	5.3	62.9	1 273.4
December	518.8	757.8	41.6	5.2	62.7	517.3	759.1	44.0	5.5	63.0	1 274.9
2007											
January	517.3	756.2	41.9	5.2	62.5	515.3	756.3	42.9	5.4	62.6	1 276.1
February	516.4	754.5	41.5	5.2	62.3	519.9	756.8	40.0	5.0	62.4	1 277.3
March	516.2	753.4	40.7	5.1	62.1	515.8	746.8	40.3	5.1	61.6	1 278.5
April	516.6	753.4	39.7	5.0	62.0	513.0	753.1	41.0	5.2	62.0	1 279.9
May	517.7	754.8	38.9	4.9	61.9	520.3	758.2	37.4	4.7	62.1	1 281.3
June	519.5	757.3	38.6	4.8	62.1	519.1	757.5	38.6	4.8	62.1	1 282.6
July	521.7	760.2	38.7	4.8	62.2	519.5	755.0	39.3	4.9	61.9	1 283.9
August	524.1	763.0	39.1	4.9	62.4	524.6	767.1	38.3	4.8	62.7	1 285.3
September	526.3	765.7	39.6	4.9	62.6	528.5	765.6	37.6	4.7	62.4	1 286.6
October	528.3	767.5	40.2	5.0	62.7	528.5	768.8	43.7	5.4	63.1	1 288.2

	TREND					SEASONALLY ADJUSTED					Civilian population aged 15 years and over
	Employed full time	Total employed	Total unemployed	Unemployment rate	Participation rate	Employed full time	Total employed	Total unemployed	Unemployment rate	Participation rate	
	'000	'000	'000	%	%	'000	'000	'000	%	%	
MALES											
October 2004	476.0	560.1	24.5	4.2	73.8	477.9	563.9	25.7	4.4	74.4	792.0
October 2005	507.2	592.0	23.7	3.9	76.4	503.0	590.6	22.5	3.7	76.1	806.0
2006											
October	523.9	606.4	18.2	2.9	75.8	523.5	606.3	18.3	2.9	75.8	823.7
November	524.2	606.4	18.5	3.0	75.7	523.1	607.1	17.6	2.8	75.6	825.8
December	524.3	606.4	18.2	2.9	75.5	522.9	603.9	18.8	3.0	75.2	827.9
2007											
January	524.2	606.9	17.8	2.8	75.3	526.3	606.7	19.4	3.1	75.5	829.7
February	524.4	608.2	17.3	2.8	75.2	525.9	608.0	17.3	2.8	75.2	831.6
March	525.2	610.3	17.2	2.7	75.3	525.0	611.6	16.1	2.6	75.3	833.4
April	527.0	612.9	17.4	2.8	75.5	526.3	611.9	14.5	2.3	75.0	835.1
May	529.5	615.6	18.0	2.8	75.7	523.1	614.1	18.6	2.9	75.6	836.9
June	532.7	618.2	18.8	3.0	76.0	532.9	619.6	21.9	3.4	76.5	838.6
July	536.0	620.5	19.6	3.1	76.2	544.8	622.6	19.3	3.0	76.4	840.4
August	538.9	622.5	20.2	3.1	76.3	537.7	621.4	19.1	3.0	76.1	842.2
September	541.3	624.2	20.6	3.2	76.4	537.4	623.9	20.2	3.1	76.3	844.0
October	543.1	625.5	20.9	3.2	76.5	544.3	625.8	21.3	3.3	76.5	846.1
FEMALES											
October 2004	224.8	437.5	24.2	5.2	57.5	227.8	439.5	24.3	5.2	57.8	803.1
October 2005	238.7	464.2	21.3	4.4	59.6	235.9	464.6	20.4	4.2	59.5	815.3
2006											
October	243.3	471.0	19.7	4.0	59.2	239.4	465.3	23.0	4.7	58.9	828.5
November	244.1	473.4	18.9	3.8	59.3	246.1	473.3	17.8	3.6	59.2	830.2
December	245.4	476.3	17.7	3.6	59.4	248.7	476.4	16.9	3.4	59.3	831.8
2007											
January	246.9	479.1	16.7	3.4	59.5	244.7	481.2	15.7	3.2	59.6	833.3
February	248.4	481.1	16.4	3.3	59.6	246.7	484.1	17.4	3.5	60.1	834.7
March	249.9	482.7	16.6	3.3	59.7	254.0	485.0	15.6	3.1	59.9	836.2
April	251.8	484.3	17.2	3.4	59.9	248.9	477.0	16.5	3.3	58.9	837.7
May	254.1	486.1	18.0	3.6	60.1	253.0	487.0	18.2	3.6	60.2	839.1
June	256.6	488.6	18.6	3.7	60.3	256.7	487.1	21.5	4.2	60.5	840.5
July	258.9	491.3	19.0	3.7	60.6	260.4	493.4	18.4	3.6	60.8	842.1
August	261.1	493.7	19.4	3.8	60.8	262.5	497.5	17.3	3.4	61.0	843.6
September	262.9	495.6	19.8	3.8	61.0	261.0	494.2	20.4	4.0	60.9	845.2
October	264.7	497.2	20.0	3.9	61.1	265.4	495.1	20.5	4.0	60.9	847.1
PERSONS											
October 2004	700.8	997.5	48.7	4.7	65.6	705.7	1 003.4	50.0	4.8	66.0	1 595.1
October 2005	745.9	1 056.2	45.0	4.1	67.9	738.9	1 055.2	42.9	3.9	67.7	1 621.2
2006											
October	767.2	1 077.4	37.9	3.4	67.5	762.8	1 071.7	41.3	3.7	67.4	1 652.2
November	768.3	1 079.8	37.4	3.3	67.5	769.2	1 080.4	35.4	3.2	67.4	1 656.0
December	769.7	1 082.8	36.0	3.2	67.4	771.6	1 080.3	35.8	3.2	67.2	1 659.7
2007											
January	771.2	1 085.9	34.5	3.1	67.4	771.1	1 087.9	35.1	3.1	67.5	1 663.0
February	772.8	1 089.3	33.6	3.0	67.4	772.6	1 092.2	34.8	3.1	67.6	1 666.3
March	775.2	1 092.9	33.8	3.0	67.5	779.1	1 096.6	31.7	2.8	67.6	1 669.6
April	778.8	1 097.1	34.7	3.1	67.7	775.2	1 088.8	30.9	2.8	66.9	1 672.8
May	783.6	1 101.8	36.0	3.2	67.9	776.1	1 101.2	36.8	3.2	67.9	1 676.0
June	789.3	1 106.8	37.4	3.3	68.1	789.6	1 106.8	43.4	3.8	68.5	1 679.2
July	794.9	1 111.8	38.7	3.4	68.4	805.3	1 116.0	37.7	3.3	68.6	1 682.5
August	800.0	1 116.3	39.6	3.4	68.6	800.2	1 118.9	36.4	3.2	68.5	1 685.8
September	804.2	1 119.8	40.4	3.5	68.7	798.5	1 118.1	40.6	3.5	68.6	1 689.1
October	807.8	1 122.7	40.9	3.5	68.8	809.8	1 120.9	41.8	3.6	68.7	1 693.1

	TREND					SEASONALLY ADJUSTED					Civilian population aged 15 years and over
	Employed full time	Total employed	Total unemployed	Unemployment rate	Participation rate	Employed full time	Total employed	Total unemployed	Unemployment rate	Participation rate	
	'000	'000	'000	%	%	'000	'000	'000	%	%	
MALES											
October 2004	99.9	117.3	8.5	6.8	66.6	100.9	117.9	8.5	6.7	66.9	188.9
October 2005	100.0	120.7	8.8	6.8	67.8	99.6	120.2	9.0	6.9	67.7	191.0
2006											
October	100.8	120.2	8.3	6.5	66.8	102.7	120.7	8.2	6.3	67.0	192.3
November	101.0	120.4	8.1	6.3	66.7	99.3	119.1	8.6	6.7	66.3	192.6
December	101.3	120.8	7.9	6.1	66.8	100.9	121.0	8.0	6.2	66.9	192.8
2007											
January	101.6	121.4	7.7	5.9	66.9	102.1	121.6	7.3	5.7	66.8	192.9
February	102.1	122.1	7.3	5.7	67.0	101.8	121.8	7.4	5.7	66.9	193.0
March	102.6	122.9	6.9	5.3	67.2	103.7	123.1	6.8	5.3	67.3	193.2
April	103.2	123.7	6.5	5.0	67.4	102.6	123.5	7.1	5.5	67.6	193.3
May	103.7	124.3	6.3	4.8	67.5	103.2	125.0	6.2	4.7	67.8	193.4
June	104.1	124.8	6.1	4.7	67.6	104.2	124.3	5.6	4.3	67.1	193.5
July	104.6	125.1	6.1	4.6	67.8	105.1	125.5	5.6	4.2	67.7	193.6
August	105.0	125.3	6.2	4.7	67.9	104.8	125.7	6.5	4.9	68.2	193.7
September	105.4	125.5	6.4	4.8	68.0	106.1	124.9	6.6	5.0	67.8	193.9
October	105.7	125.6	6.5	4.9	68.1	105.1	125.7	6.9	5.2	68.3	194.0
FEMALES											
October 2004	47.2	96.7	5.8	5.7	51.7	47.3	96.3	5.9	5.8	51.6	198.2
October 2005	49.9	101.1	6.8	6.3	54.0	48.1	99.6	8.0	7.4	53.9	199.8
2006											
October	53.1	103.1	6.1	5.6	54.3	53.5	103.3	6.4	5.8	54.5	201.4
November	53.1	102.9	6.2	5.6	54.1	53.5	103.2	5.6	5.2	54.0	201.6
December	52.9	102.8	6.1	5.6	53.9	52.9	102.8	6.0	5.5	53.9	201.8
2007											
January	52.7	102.7	5.9	5.4	53.8	52.8	103.8	6.2	5.7	54.5	201.9
February	52.2	102.5	5.6	5.2	53.5	52.4	101.5	5.5	5.2	53.0	202.0
March	51.7	102.2	5.6	5.2	53.3	51.4	101.9	5.8	5.4	53.3	202.2
April	51.3	101.9	5.6	5.2	53.1	51.1	102.4	5.5	5.1	53.4	202.3
May	51.1	101.8	5.6	5.2	53.1	51.1	102.4	4.1	3.8	52.6	202.4
June	51.0	101.9	5.8	5.4	53.2	51.2	100.9	6.9	6.4	53.3	202.5
July	51.0	102.2	6.0	5.5	53.4	50.5	102.1	6.3	5.8	53.5	202.6
August	51.0	102.4	6.1	5.6	53.5	51.1	101.7	6.3	5.9	53.3	202.8
September	51.0	102.7	6.2	5.7	53.7	51.7	104.5	5.2	4.7	54.0	202.9
October	51.0	103.0	6.3	5.8	53.8	50.5	102.6	6.8	6.2	53.9	203.1
PERSONS											
October 2004	147.1	214.0	14.3	6.3	59.0	148.2	214.2	14.4	6.3	59.0	387.2
October 2005	149.9	221.7	15.6	6.6	60.7	147.7	219.9	17.0	7.2	60.6	390.8
2006											
October	153.9	223.4	14.5	6.1	60.4	156.2	224.1	14.6	6.1	60.6	393.8
November	154.0	223.3	14.3	6.0	60.3	152.8	222.3	14.2	6.0	60.0	394.2
December	154.2	223.6	14.0	5.9	60.2	153.7	223.8	14.0	5.9	60.3	394.6
2007											
January	154.3	224.0	13.5	5.7	60.2	154.9	225.4	13.5	5.7	60.5	394.8
February	154.3	224.6	13.0	5.5	60.1	154.2	223.3	12.9	5.5	59.8	395.1
March	154.4	225.1	12.5	5.3	60.1	155.2	225.0	12.7	5.3	60.1	395.3
April	154.5	225.6	12.1	5.1	60.1	153.7	225.9	12.7	5.3	60.3	395.5
May	154.8	226.1	11.9	5.0	60.1	154.3	227.4	10.3	4.3	60.0	395.8
June	155.1	226.7	11.9	5.0	60.2	155.4	225.2	12.5	5.3	60.0	396.0
July	155.6	227.3	12.0	5.0	60.4	155.5	227.7	11.8	4.9	60.4	396.2
August	156.0	227.8	12.3	5.1	60.5	155.9	227.4	12.9	5.4	60.6	396.5
September	156.4	228.2	12.6	5.2	60.7	157.8	229.4	11.8	4.9	60.8	396.8
October	156.7	228.6	12.9	5.3	60.8	155.6	228.3	13.7	5.7	60.9	397.1

	TREND					<i>Civilian population aged 15 years and over</i>
	<i>Employed full time</i>	<i>Total employed</i>	<i>Total unemployed</i>	<i>Unemployment rate</i>	<i>Participation rate</i>	
	'000	'000	'000	%	%	
MALES						
October 2004	43.2	51.1	3.9	7.0	73.8	74.5
October 2005	44.2	52.5	3.1	5.6	73.0	76.2
2006						
October	48.0	55.6	2.5	4.3	73.6	78.9
November	48.2	56.1	2.2	3.7	73.6	79.2
December	48.5	56.5	2.0	3.4	73.7	79.4
2007						
January	48.8	56.9	2.0	3.4	74.1	79.6
February	49.0	57.2	2.3	3.8	74.5	79.7
March	49.3	57.4	2.6	4.3	75.1	79.9
April	49.7	57.8	2.9	4.8	75.7	80.1
May	50.2	58.2	3.1	5.1	76.3	80.4
June	50.8	58.8	3.1	5.0	76.8	80.6
July	51.5	59.4	3.0	4.8	77.3	80.7
August	52.1	59.9	2.8	4.5	77.6	80.9
September	52.6	60.4	2.7	4.2	77.9	81.0
October	53.0	60.8	2.5	3.9	78.0	81.1
FEMALES						
October 2004	29.7	44.2	2.6	5.6	66.8	70.0
October 2005	30.8	44.0	2.5	5.4	65.1	71.4
2006						
October	34.0	46.4	1.0	2.2	65.2	72.8
November	34.0	46.3	1.0	2.1	64.9	72.9
December	33.9	46.2	1.1	2.3	64.8	73.0
2007						
January	33.7	46.1	1.3	2.7	64.9	73.1
February	33.5	46.1	1.5	3.1	65.0	73.1
March	33.3	46.1	1.6	3.4	65.2	73.2
April	33.4	46.3	1.7	3.6	65.4	73.4
May	33.6	46.6	1.8	3.8	65.9	73.5
June	33.9	47.1	1.9	3.9	66.5	73.7
July	34.2	47.6	2.0	4.1	67.2	73.8
August	34.5	47.9	2.2	4.5	67.8	74.0
September	34.6	48.2	2.5	4.9	68.3	74.1
October	34.7	48.3	2.7	5.3	68.8	74.3
PERSONS						
October 2004	72.9	95.3	6.5	6.4	70.4	144.5
October 2005	75.0	96.5	5.6	5.5	69.1	147.6
2006						
October	82.0	102.0	3.5	3.3	69.6	151.7
November	82.3	102.4	3.1	3.0	69.4	152.0
December	82.4	102.8	3.0	2.9	69.5	152.4
2007						
January	82.5	103.1	3.3	3.1	69.7	152.7
February	82.5	103.3	3.7	3.5	70.0	152.9
March	82.6	103.6	4.2	3.9	70.3	153.1
April	83.1	104.1	4.7	4.3	70.8	153.5
May	83.8	104.9	4.9	4.5	71.3	153.9
June	84.8	105.9	5.0	4.5	71.9	154.2
July	85.7	107.0	5.0	4.5	72.5	154.5
August	86.5	107.9	5.1	4.5	72.9	154.8
September	87.2	108.6	5.1	4.5	73.3	155.1
October	87.7	109.1	5.2	4.6	73.6	155.5

	TREND					<i>Civilian population aged 15 years and over</i>
	<i>Employed full time</i>	<i>Total employed</i>	<i>Total unemployed</i>	<i>Unemployment rate</i>	<i>Participation rate</i>	
	'000	'000	'000	%	%	
MALES						
October 2004	78.3	91.4	4.4	4.6	76.7	124.9
October 2005	79.7	94.5	3.1	3.1	77.2	126.3
2006						
October	83.1	97.2	3.0	3.0	78.4	127.8
November	83.4	97.4	3.0	3.0	78.4	128.1
December	83.4	97.6	3.0	3.0	78.4	128.3
2007						
January	83.4	97.7	3.1	3.0	78.4	128.6
February	83.3	97.9	3.1	3.1	78.4	128.8
March	83.4	98.2	3.2	3.2	78.6	129.1
April	83.5	98.6	3.2	3.1	78.8	129.2
May	83.7	98.8	3.1	3.1	78.8	129.4
June	84.0	99.0	3.0	2.9	78.7	129.5
July	84.3	99.2	2.8	2.7	78.6	129.8
August	84.4	99.5	2.6	2.6	78.5	130.1
September	84.6	99.7	2.5	2.5	78.5	130.3
October	84.7	99.9	2.4	2.4	78.4	130.6
FEMALES						
October 2004	53.0	86.0	2.7	3.0	67.0	132.3
October 2005	53.9	85.9	3.3	3.6	67.0	133.1
2006						
October	59.5	91.7	2.6	2.8	70.0	134.7
November	59.4	91.4	2.7	2.9	69.8	134.9
December	59.2	91.0	2.8	2.9	69.4	135.0
2007						
January	59.0	90.5	2.7	2.9	69.0	135.2
February	58.7	90.1	2.7	2.9	68.6	135.3
March	58.5	89.7	2.7	2.9	68.2	135.5
April	58.3	89.5	2.7	2.9	68.0	135.6
May	58.1	89.3	2.7	2.9	67.7	135.7
June	57.9	89.1	2.6	2.9	67.5	135.8
July	57.9	88.9	2.6	2.8	67.2	136.0
August	57.9	88.7	2.5	2.7	66.9	136.3
September	57.9	88.5	2.4	2.6	66.6	136.6
October	58.0	88.3	2.3	2.5	66.3	136.8
PERSONS						
October 2004	131.3	177.3	7.1	3.9	71.7	257.1
October 2005	133.6	180.3	6.3	3.4	72.0	259.3
2006						
October	142.6	188.9	5.6	2.9	74.1	262.5
November	142.7	188.8	5.7	2.9	74.0	262.9
December	142.6	188.5	5.8	3.0	73.8	263.4
2007						
January	142.4	188.2	5.8	3.0	73.6	263.8
February	142.1	188.0	5.8	3.0	73.4	264.1
March	141.9	188.0	5.9	3.0	73.3	264.5
April	141.8	188.0	5.9	3.0	73.2	264.8
May	141.8	188.1	5.8	3.0	73.1	265.1
June	141.9	188.1	5.6	2.9	73.0	265.3
July	142.2	188.2	5.4	2.8	72.8	265.8
August	142.4	188.2	5.1	2.7	72.6	266.4
September	142.5	188.2	4.9	2.5	72.4	266.9
October	142.7	188.2	4.7	2.5	72.2	267.5

Original—October 2007

	EMPLOYED			UNEMPLOYED			UNEMPLOYMENT RATE			Participation rate	
	Full time	Part time	Total	Looking for f/t work	Total	Labour force	Not in labour force	Civilian population aged 15 years and over	Looking for f/t work		Total
	'000	'000	'000	'000	'000	'000	'000	'000	%		%
MALES											
New South Wales	1 584.1	278.4	1 862.4	57.5	76.5	1 938.9	816.0	2 755.0	3.5	3.9	70.4
Victoria	1 207.3	222.5	1 429.8	44.5	57.0	1 486.8	576.2	2 063.0	3.6	3.8	72.1
Queensland	1 017.1	161.6	1 178.6	27.7	38.5	1 217.1	431.8	1 648.9	2.7	3.2	73.8
South Australia	342.4	70.5	413.0	19.0	24.8	437.8	195.5	633.3	5.3	5.7	69.1
Western Australia	539.4	83.7	623.2	17.4	21.3	644.5	201.6	846.1	3.1	3.3	76.2
Tasmania	103.1	21.7	124.8	5.7	7.0	131.9	62.2	194.0	5.2	5.3	68.0
Northern Territory	52.8	8.3	61.2	*0.9	*2.0	63.2	18.0	81.1	*1.6	*3.2	77.9
Australian Capital Territory	84.2	15.9	100.2	1.5	2.4	102.6	28.1	130.6	1.8	2.3	78.5
Australia	4 930.5	862.7	5 793.2	174.2	229.5	6 022.7	2 329.3	8 352.0	3.4	3.8	72.1
FEMALES											
New South Wales	839.0	667.3	1 506.3	43.9	78.8	1 585.1	1 252.6	2 837.7	5.0	5.0	55.9
Victoria	643.3	536.5	1 179.8	28.4	56.2	1 236.0	916.0	2 152.0	4.2	4.5	57.4
Queensland	555.3	422.9	978.2	21.3	36.6	1 014.8	658.9	1 673.8	3.7	3.6	60.6
South Australia	185.1	169.0	354.1	12.1	17.7	371.8	283.2	655.0	6.2	4.8	56.8
Western Australia	259.9	234.7	494.7	10.4	18.5	513.2	333.8	847.1	3.8	3.6	60.6
Tasmania	50.7	52.0	102.7	4.5	7.7	110.4	92.6	203.1	8.1	7.0	54.4
Northern Territory	34.8	14.0	48.7	*1.2	*2.4	51.1	23.2	74.3	*3.4	*4.6	68.7
Australian Capital Territory	57.1	31.0	88.1	*0.6	1.9	90.0	46.8	136.8	*1.1	2.1	65.8
Australia	2 625.2	2 127.3	4 752.6	122.4	219.8	4 972.4	3 607.3	8 579.7	4.5	4.4	58.0
PERSONS											
New South Wales	2 423.1	945.6	3 368.7	101.4	155.3	3 524.0	2 068.6	5 592.6	4.0	4.4	63.0
Victoria	1 850.6	759.0	2 609.6	72.9	113.1	2 722.7	1 492.3	4 215.0	3.8	4.2	64.6
Queensland	1 572.4	584.5	2 156.9	49.1	75.1	2 231.9	1 090.8	3 322.7	3.0	3.4	67.2
South Australia	527.5	239.5	767.1	31.2	42.5	809.6	478.6	1 288.2	5.6	5.3	62.8
Western Australia	799.4	318.5	1 117.8	27.7	39.8	1 157.7	535.4	1 693.1	3.4	3.4	68.4
Tasmania	153.9	73.7	227.6	10.2	14.7	242.3	154.8	397.1	6.2	6.1	61.0
Northern Territory	87.6	22.3	109.9	*2.1	4.4	114.3	41.2	155.5	*2.3	3.8	73.5
Australian Capital Territory	141.3	46.9	188.2	2.2	4.3	192.6	74.9	267.5	1.5	2.3	72.0
Australia	7 555.7	2 990.1	10 545.8	296.7	449.3	10 995.1	5 936.6	16 931.7	3.8	4.1	64.9

* estimate is subject to sampling variability too high for most practical purposes

	EMPLOYED		UNEMPLOYED		UNEMPLOYMENT RATE		Participation rate	Employment to population ratio	Unemployment to population ratio – looking for full-time work
	Full time	Total	Looking for f/t work	Total	Looking for f/t work	Total			
	'000	'000	'000	'000	%	%			
MALES									
October 2004	149.6	346.1	35.5	68.6	19.2	16.5	58.3	48.6	5.0
October 2005	157.9	349.3	35.5	66.5	18.4	16.0	58.2	48.9	5.0
2006									
October	154.3	358.9	33.9	63.1	18.0	14.9	58.5	49.8	4.7
November	153.8	359.1	33.4	61.7	17.9	14.6	58.3	49.8	4.6
December	153.5	359.9	32.8	60.1	17.6	14.3	58.1	49.8	4.5
2007									
January	153.8	361.2	32.0	58.8	17.2	14.0	58.0	49.9	4.4
February	154.8	362.5	31.3	57.6	16.8	13.7	57.9	50.0	4.3
March	156.9	364.0	30.8	56.9	16.4	13.5	58.0	50.1	4.2
April	159.5	365.1	30.7	56.5	16.1	13.4	58.0	50.2	4.2
May	161.7	365.4	30.8	56.6	16.0	13.4	58.0	50.2	4.2
June	163.1	364.9	31.2	57.3	16.0	13.6	58.0	50.1	4.3
July	163.8	364.0	31.5	58.2	16.1	13.8	57.9	49.9	4.3
August	164.2	363.1	31.8	59.2	16.2	14.0	57.9	49.8	4.4
September	164.5	362.3	32.0	60.2	16.3	14.2	57.9	49.6	4.4
October	164.6	361.6	32.2	61.1	16.4	14.4	57.8	49.4	4.4
FEMALES									
October 2004	86.1	353.1	24.9	60.6	22.4	14.6	60.5	51.7	3.6
October 2005	83.6	358.4	25.5	60.9	23.4	14.5	61.3	52.4	3.7
2006									
October	85.9	363.0	26.1	55.7	23.3	13.3	60.8	52.7	3.8
November	85.5	361.0	26.4	56.3	23.6	13.5	60.5	52.3	3.8
December	85.0	359.5	26.4	57.2	23.7	13.7	60.3	52.0	3.8
2007									
January	85.0	359.5	26.0	58.0	23.4	13.9	60.4	52.0	3.8
February	85.3	361.1	25.2	58.2	22.8	13.9	60.5	52.1	3.6
March	85.6	363.4	24.4	57.8	22.2	13.7	60.7	52.4	3.5
April	85.8	365.5	23.5	56.9	21.5	13.5	60.9	52.7	3.4
May	86.1	366.9	23.0	56.1	21.1	13.3	60.9	52.8	3.3
June	86.2	367.5	22.7	55.6	20.8	13.1	60.8	52.8	3.3
July	86.5	367.5	22.5	55.5	20.6	13.1	60.7	52.8	3.2
August	86.9	367.3	22.2	55.5	20.3	13.1	60.6	52.7	3.2
September	87.4	367.1	21.8	55.7	20.0	13.2	60.6	52.6	3.1
October	87.8	367.0	21.5	55.9	19.7	13.2	60.5	52.5	3.1
PERSONS									
October 2004	235.6	699.2	60.4	129.2	20.4	15.6	59.4	50.1	4.3
October 2005	241.5	707.7	61.0	127.4	20.2	15.3	59.7	50.6	4.4
2006									
October	240.2	721.9	60.0	118.8	20.0	14.1	59.6	51.2	4.3
November	239.2	720.1	59.8	117.9	20.0	14.1	59.4	51.0	4.2
December	238.5	719.4	59.2	117.3	19.9	14.0	59.2	50.9	4.2
2007									
January	238.7	720.7	58.0	116.8	19.6	13.9	59.2	50.9	4.1
February	240.1	723.6	56.5	115.7	19.1	13.8	59.2	51.0	4.0
March	242.5	727.4	55.2	114.6	18.5	13.6	59.3	51.2	3.9
April	245.3	730.6	54.2	113.5	18.1	13.4	59.4	51.4	3.8
May	247.7	732.3	53.8	112.7	17.9	13.3	59.4	51.5	3.8
June	249.3	732.4	53.9	112.9	17.8	13.4	59.3	51.4	3.8
July	250.3	731.5	54.0	113.7	17.7	13.4	59.3	51.3	3.8
August	251.2	730.4	54.0	114.7	17.7	13.6	59.2	51.2	3.8
September	251.9	729.4	53.9	115.9	17.6	13.7	59.2	51.1	3.8
October	252.4	728.5	53.7	117.0	17.6	13.8	59.2	50.9	3.8

	EMPLOYED		UNEMPLOYED		UNEMPLOYMENT RATE		Participation rate	Employment to population ratio	Unemployment to population ratio – looking for full-time work
	Full time	Total	Looking for f/t work	Total	Looking for f/t work	Total			
	'000	'000	'000	'000	%	%			
MALES									
October 2004	147.1	340.2	32.5	67.4	18.1	16.5	57.3	47.8	4.6
October 2005	151.6	339.0	36.0	71.7	19.2	17.5	57.4	47.4	5.0
2006									
October	155.4	361.3	26.0	57.7	14.3	13.8	58.1	50.1	3.6
November	155.3	358.0	34.3	62.3	18.1	14.8	58.2	49.6	4.8
December	153.4	360.5	32.3	59.9	17.4	14.2	58.2	49.9	4.5
2007									
January	152.6	361.1	33.1	59.2	17.8	14.1	58.1	49.9	4.6
February	150.0	358.9	31.9	59.0	17.5	14.1	57.6	49.5	4.4
March	156.4	363.7	29.2	56.3	15.7	13.4	57.8	50.1	4.0
April	164.3	369.7	30.0	54.2	15.4	12.8	58.3	50.8	4.1
May	163.8	368.1	30.3	58.0	15.6	13.6	58.5	50.6	4.2
June	159.6	358.5	32.9	56.9	17.1	13.7	57.0	49.2	4.5
July	165.1	368.2	31.8	56.1	16.2	13.2	58.2	50.5	4.4
August	166.4	362.9	32.7	65.1	16.4	15.2	58.7	49.7	4.5
September	160.5	358.8	28.5	53.7	15.1	13.0	56.5	49.1	3.9
October	166.8	364.0	34.4	64.6	17.1	15.1	58.6	49.8	4.7
FEMALES									
October 2004	88.1	355.0	24.8	58.7	21.9	14.2	60.5	52.0	3.6
October 2005	81.2	353.2	27.5	63.1	25.3	15.2	60.8	51.6	4.0
2006									
October	88.3	362.8	26.5	53.2	23.1	12.8	60.4	52.7	3.8
November	85.3	354.5	25.3	55.4	22.9	13.5	59.4	51.4	3.7
December	83.7	361.9	28.0	59.3	25.0	14.1	61.0	52.4	4.0
2007									
January	84.2	359.2	26.6	58.5	24.0	14.0	60.4	51.9	3.8
February	85.2	359.3	25.0	60.0	22.7	14.3	60.6	51.9	3.6
March	86.1	363.5	24.6	56.7	22.2	13.5	60.6	52.4	3.6
April	86.8	363.2	21.8	56.5	20.0	13.5	60.5	52.3	3.1
May	86.4	373.0	24.2	56.5	21.8	13.2	61.8	53.7	3.5
June	86.1	369.3	21.2	53.3	19.7	12.6	60.7	53.1	3.0
July	83.6	364.5	23.7	56.8	22.1	13.5	60.5	52.3	3.4
August	88.4	365.7	22.6	56.2	20.4	13.3	60.5	52.4	3.2
September	89.0	367.0	22.4	54.0	20.1	12.8	60.3	52.6	3.2
October	87.3	368.3	20.1	57.3	18.7	13.5	60.9	52.7	2.9
PERSONS									
October 2004	235.1	695.2	57.3	126.1	19.6	15.4	58.9	49.8	4.1
October 2005	232.8	692.2	63.5	134.9	21.4	16.3	59.1	49.5	4.5
2006									
October	243.7	724.1	52.5	110.9	17.7	13.3	59.2	51.4	3.7
November	240.6	712.5	59.6	117.7	19.9	14.2	58.8	50.5	4.2
December	237.1	722.4	60.3	119.1	20.3	14.2	59.5	51.1	4.3
2007									
January	236.9	720.3	59.7	117.7	20.1	14.0	59.2	50.9	4.2
February	235.3	718.2	56.9	119.1	19.5	14.2	59.1	50.7	4.0
March	242.6	727.2	53.8	113.0	18.2	13.5	59.2	51.2	3.8
April	251.1	732.9	51.7	110.7	17.1	13.1	59.4	51.6	3.6
May	250.2	741.1	54.4	114.5	17.9	13.4	60.1	52.1	3.8
June	245.6	727.9	54.1	110.2	18.0	13.1	58.8	51.1	3.8
July	248.6	732.7	55.5	112.9	18.2	13.4	59.3	51.4	3.9
August	254.8	728.6	55.3	121.2	17.8	14.3	59.6	51.1	3.9
September	249.6	725.8	50.8	107.7	16.9	12.9	58.4	50.8	3.6
October	254.1	732.3	54.5	121.9	17.7	14.3	59.7	51.2	3.8

	EMPLOYED			UNEMPLOYED			Civilian population aged 15–19 years	UNEMPLOYMENT RATE		Participation rate	Unemployment to population ratio – looking for full-time work	
	Full time	Part time	Total	Looking for f/t work	Total	Labour force		Looking for f/t work	Total			
	'000	'000	'000	'000	'000	'000		'000	'000			%
NOT ATTENDING FULL-TIME EDUCATION												
Males												
October 2004	135.9	29.0	164.9	25.7	27.9	192.8	24.2	217.0	15.9	14.5	88.9	11.9
October 2005	137.9	34.2	172.1	28.2	31.0	203.1	18.3	221.4	17.0	15.3	91.7	12.7
October 2006	139.9	38.4	178.4	21.6	24.1	202.4	28.7	231.1	13.4	11.9	87.6	9.3
October 2007	147.7	34.5	182.2	26.8	30.1	212.3	16.8	229.1	15.3	14.2	92.7	11.7
Females												
October 2004	78.9	54.5	133.4	16.1	18.8	152.2	28.3	180.5	16.9	12.4	84.3	8.9
October 2005	73.8	46.0	119.8	19.4	23.4	143.2	22.3	165.5	20.8	16.3	86.5	11.7
October 2006	81.2	42.0	123.2	17.0	18.4	141.7	22.8	164.5	17.3	13.0	86.1	10.3
October 2007	77.0	44.2	121.1	13.4	15.4	136.5	23.9	160.4	14.9	11.3	85.1	8.4
Persons												
October 2004	214.8	83.5	298.2	41.8	46.7	345.0	52.5	397.4	16.3	13.5	86.8	10.5
October 2005	211.7	80.2	291.9	47.6	54.4	346.3	40.6	386.9	18.3	15.7	89.5	12.3
October 2006	221.1	80.4	301.6	38.5	42.5	344.1	51.5	395.6	14.8	12.4	87.0	9.7
October 2007	224.6	78.7	303.3	40.2	45.5	348.8	40.7	389.5	15.2	13.0	89.6	10.3
ATTENDING FULL-TIME EDUCATION												
Males												
October 2004	5.5	168.1	173.6	5.6	34.8	208.4	286.1	494.5	50.7	16.7	42.1	1.1
October 2005	7.5	157.8	165.3	6.7	36.2	201.4	292.3	493.7	47.2	18.0	40.8	1.4
October 2006	8.9	172.4	181.3	*3.8	30.3	211.5	278.1	489.6	*29.7	14.3	43.2	*0.8
October 2007	11.9	168.4	180.3	6.8	30.8	211.1	291.0	502.1	36.2	14.6	42.0	1.3
Females												
October 2004	7.1	210.8	217.9	5.3	35.9	253.8	249.0	502.8	42.7	14.1	50.5	1.0
October 2005	5.7	223.8	229.5	*4.2	35.3	264.8	253.9	518.7	*42.5	13.3	51.1	*0.8
October 2006	5.4	230.3	235.6	5.7	31.1	266.7	257.7	524.4	51.3	11.7	50.9	1.1
October 2007	8.7	234.2	242.9	*3.7	38.0	280.9	257.8	538.7	*30.0	13.5	52.1	*0.7
Persons												
October 2004	12.5	378.9	391.5	10.9	70.7	462.2	535.1	997.3	46.4	15.3	46.3	1.1
October 2005	13.2	381.6	394.8	10.9	71.5	466.3	546.2	1 012.5	45.2	15.3	46.1	1.1
October 2006	14.3	402.6	416.9	9.4	61.3	478.2	535.8	1 014.1	39.7	12.8	47.2	0.9
October 2007	20.6	402.6	423.2	10.5	68.8	492.0	548.8	1 040.8	33.7	14.0	47.3	1.0
TOTAL												
Males												
October 2004	141.4	197.1	338.4	31.3	62.7	401.2	310.3	711.5	18.1	15.6	56.4	4.4
October 2005	145.4	192.0	337.4	34.9	67.2	404.5	310.6	715.1	19.3	16.6	56.6	4.9
October 2006	148.8	210.8	359.6	25.3	54.3	413.9	306.8	720.7	14.5	13.1	57.4	3.5
October 2007	159.6	202.9	362.5	33.5	60.9	423.4	307.8	731.2	17.4	14.4	57.9	4.6
Females												
October 2004	85.9	265.3	351.3	21.4	54.7	406.0	277.3	683.2	19.9	13.5	59.4	3.1
October 2005	79.5	269.8	349.4	23.6	58.7	408.0	276.2	684.2	22.9	14.4	59.6	3.4
October 2006	86.6	272.3	358.9	22.6	49.5	408.4	280.6	688.9	20.7	12.1	59.3	3.3
October 2007	85.6	278.4	364.0	17.2	53.4	417.5	281.6	699.1	16.7	12.8	59.7	2.5
Persons												
October 2004	227.3	462.4	689.7	52.7	117.4	807.2	587.6	1 394.7	18.8	14.5	57.9	3.8
October 2005	224.9	461.8	686.7	58.5	125.8	812.6	586.8	1 399.3	20.6	15.5	58.1	4.2
October 2006	235.4	483.1	718.5	47.9	103.8	822.3	587.3	1 409.6	16.9	12.6	58.3	3.4
October 2007	245.2	481.3	726.5	50.7	114.3	840.8	589.5	1 430.3	17.1	13.6	58.8	3.5

* estimate is subject to sampling variability too high for most practical purposes

	EMPLOYED			UNEMPLOYED			Civilian population aged 15–19 years	UNEMPLOYMENT RATE		Participation rate	Unemployment to population ratio – looking for full-time work	
	Full time	Part time	Total	Looking for work	Total	Labour force		Not in labour force	Looking for work			Total
	'000	'000	'000	'000	'000	'000		'000	%			%
NOT ATTENDING FULL-TIME EDUCATION												
New South Wales	66.3	27.9	94.3	15.3	16.9	111.1	14.0	125.2	18.8	15.2	88.8	12.3
Victoria	42.3	13.9	56.2	6.5	7.4	63.6	5.8	69.4	13.3	11.7	91.6	9.3
Queensland	56.4	15.5	71.9	8.3	10.2	82.1	9.1	91.2	12.8	12.4	90.1	9.1
South Australia	13.0	6.1	19.1	3.8	4.0	23.0	3.5	26.5	22.6	17.3	87.0	14.3
Western Australia	35.7	10.9	46.6	3.9	4.3	50.9	4.1	55.0	9.9	8.5	92.6	7.1
Tasmania	4.9	1.8	6.7	*1.3	*1.4	8.2	1.4	9.6	*20.8	*17.7	85.2	*13.5
Northern Territory	2.9	1.6	4.5	*0.8	*1.0	5.4	2.4	7.8	*21.9	*17.6	69.8	*10.3
Australian Capital Territory	3.1	*0.9	4.1	*0.3	*0.3	4.4	*0.4	4.8	*8.9	*7.0	91.7	*6.4
Australia	224.6	78.7	303.3	40.2	45.5	348.8	40.7	389.5	15.2	13.0	89.6	10.3
ATTENDING FULL-TIME EDUCATION												
New South Wales	6.9	111.4	118.3	*3.2	21.6	139.9	200.2	340.1	*31.9	15.4	41.1	*1.0
Victoria	*2.1	107.0	109.1	*3.6	18.7	127.8	149.1	276.9	*63.1	14.7	46.1	*1.3
Queensland	5.4	96.8	102.3	*0.9	13.6	115.9	85.5	201.4	*14.3	11.8	57.5	*0.5
South Australia	2.1	29.8	31.9	*1.4	5.5	37.4	40.7	78.1	*40.3	14.7	47.9	*1.8
Western Australia	3.4	38.2	41.6	*1.0	5.5	47.1	46.7	93.8	*21.9	11.8	50.2	*1.0
Tasmania	*0.2	8.8	9.0	*0.3	2.5	11.5	13.0	24.5	*61.4	21.7	46.8	*1.2
Northern Territory	*—	2.4	2.4	*0.1	*0.3	2.7	4.9	7.6	*100.0	*11.0	35.1	*1.2
Australian Capital Territory	*0.5	8.3	8.8	*—	*1.0	9.8	8.6	18.4	*—	*10.4	53.3	*—
Australia	20.6	402.6	423.2	10.5	68.8	492.0	548.8	1 040.8	33.7	14.0	47.3	1.0
TOTAL												
New South Wales	73.2	139.4	212.6	18.6	38.4	251.0	214.2	465.2	20.2	15.3	54.0	4.0
Victoria	44.4	120.8	165.2	10.1	26.1	191.4	154.9	346.3	18.5	13.7	55.3	2.9
Queensland	61.9	112.3	174.2	9.2	23.9	198.1	94.6	292.6	12.9	12.1	67.7	3.1
South Australia	15.1	35.9	51.0	5.2	9.5	60.4	44.2	104.6	25.7	15.7	57.8	5.0
Western Australia	39.1	49.1	88.2	4.9	9.9	98.0	50.8	148.9	11.1	10.1	65.9	3.3
Tasmania	5.1	10.6	15.7	*1.6	3.9	19.6	14.5	34.1	*23.7	20.0	57.6	*4.7
Northern Territory	2.9	4.0	6.8	*0.9	*1.2	8.1	7.3	15.4	*23.7	*15.4	52.7	*5.8
Australian Capital Territory	3.6	9.3	12.9	*0.3	*1.3	14.2	9.0	23.2	*7.8	*9.4	61.2	*1.3
Australia	245.2	481.3	726.5	50.7	114.3	840.8	589.5	1 430.3	17.1	13.6	58.8	3.5

* estimate is subject to sampling variability too high for most practical purposes

— nil or rounded to zero (including null cells)

WHAT IF...? REVISIONS TO TREND ESTIMATES

EFFECT OF NEW SEASONALLY ADJUSTED ESTIMATES ON TREND ESTIMATES

TREND REVISIONS

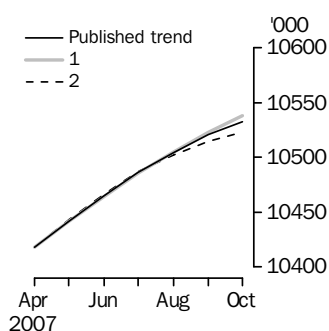
Each time new seasonally adjusted estimates become available, trend estimates are revised. This revision is a combined result of the concurrent seasonal adjustment process and the application of surrogates of the Henderson average to the seasonally adjusted series (see paragraphs 25 to 33 of the Explanatory Notes).

The examples in the tables below show two illustrative scenarios and the consequent revisions to previous trend estimates of employment and the unemployment rate. The revisions in the scenarios below are only due to the use of surrogates of the Henderson average, as the impact of revision of the seasonally adjusted estimates can not be estimated in advance.

- (1) The November seasonally adjusted estimate is *higher* than the October estimate by:
 - 0.26% for employment
 - 1.80% for the unemployment rate
- (2) The November seasonally adjusted estimate is *lower* than the October estimate by:
 - 0.26% for employment
 - 1.80% for the unemployment rate

The percentage changes of 0.26% and 1.80% were chosen because they represent the average absolute monthly percentage changes in employment and the unemployment rate respectively.

EMPLOYMENT



WHAT IF NEXT MONTH'S

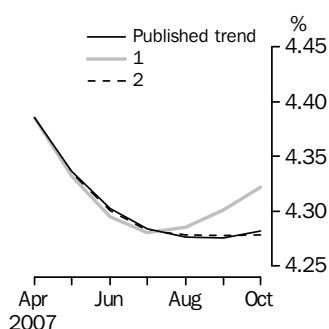
SEASONALLY ADJUSTED ESTIMATE IS:

(1) 10 561.2 i.e. rises by 0.26% (2) 10 506.4 i.e. falls by 0.26%

2007

	<i>Trend as published</i>	(1) 10 561.2 i.e. <i>rises by 0.26%</i>	(2) 10 506.4 i.e. <i>falls by 0.26%</i>
July	10 486.0	10 485.9	10 486.8
August	10 504.6	10 505.0	10 502.5
September	10 520.6	10 522.5	10 514.4
October	10 532.1	10 538.1	10 522.8

UNEMPLOYMENT RATE



WHAT IF NEXT MONTH'S

SEASONALLY ADJUSTED ESTIMATE IS:

(1) 4.4 i.e. rises by 1.80% (2) 4.3 i.e. falls by 1.80%

2007

	<i>Trend as published</i>	(1) 4.4 i.e. <i>rises by 1.80%</i>	(2) 4.3 i.e. <i>falls by 1.80%</i>
July	4.3	4.3	4.3
August	4.3	4.3	4.3
September	4.3	4.3	4.3
October	4.3	4.3	4.3

EXPLANATORY NOTES

INTRODUCTION

1 This publication contains estimates of the civilian labour force derived from the Labour Force Survey component of the Monthly Population Survey. The full time series for estimates from this publication are also available electronically – see *Labour Force, Australia, Spreadsheets* (cat. no. 6202.0.55.001). More detailed estimates are released one week after this publication in various electronic formats – see *Labour Force, Australia, Detailed – Electronic Delivery* (cat. no. 6291.0.55.001) and *Labour Force, Australia, Detailed, Quarterly* (cat. no. 6291.0.55.003).

CONCEPTS, SOURCES AND METHODS

2 The conceptual framework used in Australia's Labour Force Survey aligns closely with the standards and guidelines set out in Resolutions of International Conferences of Labour Statisticians. Descriptions of the underlying concepts and structure of Australia's labour force statistics, and the sources and methods used in compiling the estimates, are presented in *Labour Statistics: Concepts, Sources and Methods* (cat. no. 6102.0.55.001) which is available on the ABS website <<http://www.abs.gov.au>> (Methods, Classifications, Concepts & Standards).

LABOUR FORCE SURVEY

3 The Labour Force Survey is based on a multi-stage area sample of private dwellings (currently about 30,000 houses, flats, etc.) and a list sample of non-private dwellings (hotels, motels, etc.), and covers about 0.45% of the population of Australia. Information is obtained from the occupants of selected dwellings by specially trained interviewers.

4 The information is collected using computer-assisted interviewing (CAI), whereby responses are recorded directly onto an electronic questionnaire on a notebook computer. The CAI method was progressively implemented from October 2003 to August 2004, replacing the 'pen and paper' method previously used.

5 Households selected for the Labour Force Survey are interviewed each month for eight months, with one-eighth of the sample being replaced each month. The first interview is conducted face-to-face. Subsequent interviews are conducted by telephone (if acceptable to the respondent).

6 The interviews are generally conducted during the two weeks beginning on the Monday between the 6th and 12th of each month. The information obtained relates to the week before the interview (i.e. the reference week). Each year, to deal with operational difficulties involved with collecting and processing the Labour Force Survey around the Christmas and New Year holiday period, interviews for December start four weeks after November interviews start, and January interviews start five weeks after December interviews start. As a result, January interviewing may commence as early as the 8th or as late as the 14th, depending on the year. Occasionally, circumstances that present significant operational difficulties for survey collection can result in a change to the normal pattern for the start of interviewing.

7 Estimates from the Labour Force Survey are published first in this publication 31 days after the commencement of interviews for that month, with the exception of estimates for each December which are published 38 days after the commencement of interviews.

SCOPE OF SURVEY

8 The Labour Force Survey includes all persons aged 15 years and over except members of the permanent defence forces, certain diplomatic personnel of overseas governments customarily excluded from census and estimated population counts, overseas residents in Australia, and members of non-Australian defence forces (and their dependants) stationed in Australia.

COVERAGE

9 In the Labour Force Survey, coverage rules are applied which aim to ensure that each person is associated with only one dwelling, and hence has only one chance of selection. The coverage rules are necessarily a balance between theoretical and operational considerations. Nevertheless, the chance of a person being enumerated at two separate dwellings in the survey is considered to be negligible.

EXPLANATORY NOTES *continued*

POPULATION BENCHMARKS

10 Labour Force Survey estimates are calculated in such a way as to add up to independent estimates of the civilian population aged 15 years and over (population benchmarks). These population benchmarks are projections of the most recently released quarterly Estimated Resident Population (ERP) data. For information on the methodology used to produce the ERP see *Australian Demographic Statistics Quarterly* (cat. no. 3101.0). To create the population benchmarks for the Labour Force Survey, the most recently released quarterly ERP estimates are projected forward one quarter past the period for which they are required. The projection is based on the historical pattern of each population component - births, deaths, interstate migration and overseas migration. By projecting one quarter past that needed for the current population benchmarks, demographic changes are smoothed in, thereby making them less noticeable in the population benchmarks.

11 The ERP series are revised annually in the March quarter issue of *Australian Demographic Statistics Quarterly* (cat. no. 3101.0), released in September each year, to incorporate more up to date information available for the population components. The revised ERP estimates are used to update the quarterly population projections used in creating the Labour Force Survey population benchmarks. Benchmarks already used in producing Labour Force Survey estimates are not updated. A process of smoothing is used in the creation of population benchmarks to reduce the effect of these annual revisions to ERP estimates on the Labour Force Survey population benchmarks.

12 Every five years the ERP series are revised to incorporate additional information available from the latest Census of Population and Housing. Following the incorporation of Census information, the ERP series prior to the latest Census are final and subject to no further revision. Labour Force Survey population benchmarks, and the estimates, are revised following this 5-yearly revision in the ERP. From the February 2004 issue of this publication, labour force estimates have been compiled using population benchmarks based on the results of the 2001 Census of Population and Housing. Revisions were made in that issue to historical labour force estimates from January 1999 to January 2004.

ESTIMATION METHOD

13 The estimation method used in the Labour Force Survey is Composite Estimation, which was introduced in May 2007. Composite Estimation combines data collected in the previous six months with current month's data to produce the current month's estimates, thereby exploiting the high correlation between overlapping samples across months in the Labour Force Survey. The Composite Estimator combines the previous and current months' data by applying different factors according to length of time in the survey. After these factors are applied, the seven months of data are weighted to align with current month population benchmarks. For details see *Information Paper: Forthcoming Changes to Labour Force Statistics, 2007* (cat. no. 6292.0).

COMPARABILITY OF SERIES

14 From April 1986, the definition of employed persons was changed to include persons who worked without pay between 1 and 14 hours per week in a family business or on a farm (i.e. contributing family workers). For further information, see paragraphs 36 and 37 of the Explanatory Notes to the February 1987 issue of *Labour Force, Australia* (cat. no. 6203.0).

15 The ABS introduced telephone interviewing into the Labour Force Survey in August 1996. Implementation was phased in for each new sample group from August 1996 to February 1997. During the period of implementation, the new method produced different estimates than would have been obtained under the old methodology. The effect dissipated over the final months of implementation and was no longer discernible from February 1997. The estimates for February 1997 and onwards are directly comparable to estimates for periods prior to August 1996. For further details, see the feature article in the June 1997 issue of *Labour Force, Australia* (cat. no. 6203.0).

EXPLANATORY NOTES *continued*

COMPARABILITY OF SERIES

continued

16 From April 2001 the Labour Force Survey has been conducted using a redesigned questionnaire containing additional data items and some minor definitional changes. The definition of unemployed persons was changed to include all persons who were waiting to start work and were available to start in the reference week. This change was introduced in February 2004, when historical unit record data were revised from April 2001 to January 2004. This revision created a small trend break at April 2001 in unemployed persons and unemployment rate series. For further details, see *Information Paper: Forthcoming Changes to Labour Force Statistics* (cat. no. 6292.0), released in December 2003.

17 Core labour force series were revised in April 2001 for the period April 1986 to March 2001 for the remaining definitional changes introduced with the redesigned questionnaire, to reduce the impact of the changes on labour force series. For further details, see *Information Paper: Implementing the Redesigned Labour Force Survey Questionnaire* (cat. no. 6295.0) and *Information Paper: Questionnaires Used in the Labour Force Survey* (cat. no. 6232.0).

18 In May 2007, an improved method of estimation, known as composite estimation, was introduced into the Labour Force Survey. In introducing this change the ABS revised unit record data from April 2001 to April 2007 based on the new estimation method. While estimates for periods prior to April 2001 are unrevised and were compiled using a different estimation method, no trend break was identified in the employed persons series. Also, no change was identified in the trend breaks in the unemployed persons and unemployment rate series which arose with the introduction of a redesigned survey form in April 2001 (as noted above in paragraph 16). For further details, see *Information Paper: Forthcoming Changes to Labour Force Statistics, 2007* (cat. no. 6292.0), released on 21 May 2007.

SURVEY SAMPLE REDESIGN

19 The Labour Force Survey sample was last reselected using information collected in the 2001 Census of Population and Housing.

20 The bulk of the new sample was phased in over the period November 2002 to June 2003, with one-eighth of this portion of the sample being introduced every month. The remainder of the sample (about 18% of the total), which covers less settled areas of Australia and non-private dwellings was rotated in full for New South Wales, Victoria, Tasmania, Northern Territory and Australian Capital Territory in November 2002, and for Queensland, South Australia and Western Australia in December 2002. Such a pattern of implementation means that any changes to labour force estimates due to differences between the two samples, or any other influences, were spread over the eight months.

21 For further details, see *Information Paper: Labour Force Survey Sample Design* (cat. no. 6269.0) and *Technical Report: New Labour Force Survey sample selections: analysis of the effect on estimates* in the October 2003 issue of *Australian Labour Market Statistics* (cat. no. 6105.0).

RELIABILITY OF ESTIMATES

22 Two types of error are possible in an estimate based on a sample survey: sampling error and non-sampling error.

23 Sampling error occurs because a sample, rather than the entire population, is surveyed. One measure of the likely difference resulting from not including all dwellings in the survey is given by the standard error. There are about two chances in three that a sample estimate will differ by less than one standard error from the figure that would have been obtained if all dwellings had been included in the survey, and about nineteen chances in twenty that the difference will be less than two standard errors. Standard errors of estimates for the latest month and of estimates of movements since the previous month are shown on pages 28 and 29. Standard errors of other estimates and other movements may be determined by using information in the paper *Labour Force*

EXPLANATORY NOTES *continued*

RELIABILITY OF ESTIMATES

continued

Survey Standard Errors (cat. no. 6298.0) which is available free of charge on the ABS website <<http://www.abs.gov.au>> (Statistics).

24 Non-sampling error arises from inaccuracies in collecting, recording and processing the data. Every effort is made to minimise reporting error by the careful design of questionnaires, intensive training and supervision of interviewers, and efficient data processing procedures. Non-sampling error also arises because information cannot be obtained from all persons selected in the survey. The Labour Force Survey receives a high level of co-operation from individuals in selected dwellings, with the average response rate over the last year being 97%. See Glossary for definition of response rate.

SEASONAL ADJUSTMENT AND TREND ESTIMATION

25 Seasonal adjustment is a means of removing the estimated effects of normal seasonal variation from the series so that the effects of other influences on the series can be more clearly recognised. Seasonal adjustment does not aim to remove the irregular or non-seasonal influences which may be present in any particular month. This means that month-to-month movements of the seasonally adjusted estimates may not be reliable indicators of trend behaviour.

26 The Labour Force Survey uses the concurrent seasonal adjustment method to derive seasonal factors. Concurrent seasonal adjustment uses data up to the current month to estimate seasonal factors for the current and all previous months. This process can result in revisions each month to estimates for earlier periods. However, in most instances, the only noticeable revisions will be to the seasonally adjusted estimates for the previous month and one year prior to the current month.

27 Seasonal adjustment is able to remove the effect of events which occur at the same time in the survey every year. However, there are some events, like holidays, which are not always at the same time in the survey cycle or which are not at the same time across Australia. The effects of these types of events on Labour Force Survey estimates cannot in all cases be removed, because the pattern of their effects cannot be determined. However, two events which are adjusted for in the seasonally adjusted series are the January interview start date and the timing of Easter.

28 For more information on concurrent seasonal adjustment and survey proximity to holiday periods, see *Information Paper: Forthcoming Changes to Labour Force Statistics* (cat. no. 6292.0) released in December 2003.

29 While seasonal factors for the complete time series are estimated each month, they will continue to be reviewed annually at a more detailed level to take into account each additional year's original data. This annual review will not normally result in significant changes to published estimates. The review is usually conducted in February each year with the results released in the February issue of this publication. In 2007 the review was delayed to coincide with the introduction of composite estimation and the results have been published in the May 2007 issue. Revised historical data concurrently released with this issue carry the outcome of the review.

30 The smoothing of seasonally adjusted series to produce 'trend' series reduces the impact of the irregular component of the seasonally adjusted series. These trend estimates are derived by applying a 13-term Henderson-weighted moving average to all months except the last six. The last six monthly trend estimates are obtained by applying surrogates of the Henderson average to the seasonally adjusted series. Trend estimates are used to analyse the underlying behaviour of a series over time.

31 While this smoothing technique enables estimates to be produced for the latest month, it does result in revisions in addition to those caused by the revision of seasonally adjusted estimates. Generally, revisions due to the use of surrogates of the Henderson average become smaller, and after three months have a negligible impact on the series.

EXPLANATORY NOTES *continued*

SEASONAL ADJUSTMENT AND TREND ESTIMATION *continued*

32 Trend estimates are published for the Northern Territory in table 10 and for the Australian Capital Territory in table 11. Unadjusted series for the two territories have shown, historically, a high degree of variability, which can lead to considerable revisions to the seasonally adjusted estimates each month when seasonal factors are estimated. For this reason, seasonally adjusted estimates are not currently published for the two Territories. In addition, caution should be exercised in the interpretation of trend estimates for the two territories, particularly for the three most recent months, where revisions may be relatively large.

33 For further information, see *A Guide to Interpreting Time Series – Monitoring Trends* (cat. no. 1349.0) or contact the Assistant Director, Time Series Analysis on (02) 6252 6345.

RELATED PUBLICATIONS

34 Users may also wish to refer to *Australian Labour Market Statistics* (cat. no. 6105.0). This publication contains additional tables and a detailed list of related publications. For further information about this publication, please contact the Assistant Director, Labour Market Statistics on (02) 6252 7636.

35 ABS Information about the labour market can be found on the Labour theme page on the ABS website <<http://www.abs.gov.au>> (Themes), or from ABS Bookshops.

36 Information about current publications and other products released by the ABS is available from the statistics page on the ABS website. The ABS also issues a daily Release Advice on the website (Future Releases) which details products to be released in the week ahead.

DATA AVAILABLE ON REQUEST

37 As well as the statistics included in this and related publications, the ABS may have other relevant data available. Inquiries should be made to the Labour Force contact officer on (02) 6252 6525 or to any ABS office.

EFFECTS OF ROUNDING

38 Estimates have been rounded and discrepancies may occur between sums of the component items and totals.

39 Estimates of movement shown in this publication are obtained by taking the difference of unrounded estimates. The movement estimate is then rounded to one decimal place. Therefore where a discrepancy occurs between the reported movement and the difference of the rounded estimates, the reported movement will be more accurate.

SYMBOLS AND ABBREVIATIONS

40 SYMBOLS AND ABBREVIATIONS

'000	thousands
ABS	Australian Bureau of Statistics
CAI	computer assisted interviewing
cat. no.	catalogue number
ERP	estimated resident population
f/t	full-time
LFS	Labour Force Survey
p/t	part-time
pts	percentage points
Seas adj.	seasonally adjusted
TAFE	Technical and Further Education

STANDARD ERRORS

STANDARD ERRORS

The estimates in this publication are based on information gained from the occupants of a sample survey of dwellings. Because the entire population is not surveyed, the published estimates are subject to sampling error. The most common way of quantifying such sampling error is to calculate the standard error for the published estimate or statistic. For more information, see paragraph 23 of the Explanatory Notes.

LEVEL ESTIMATES

To illustrate, let us say the published level estimate for employed persons aged 15–19 years is 700,000 and the associated standard error is 8,300. The standard error is then used to interpret the level estimate of 700,000. For instance, the standard error of 8,300 indicates that:

- There are approximately two chances in three that the real value falls within the range 691,700 to 708,300 (700,000 + or – 8,300)
- There are approximately nineteen chances in twenty that the real value falls within the range 683,400 to 716,600 (700,000 + or – 16,600).

The real value in this case is the result we would obtain if we could enumerate the total population.

The following table shows the standard errors for this month's level estimates.

AUSTRALIA												
.....												
		NSW	Vic.	Qld	SA	WA	Tas.	NT	ACT	Males	Females	Persons
Aged 15 years and over												
Employed												
Full time	'000	18.6	18.1	13.1	6.0	7.8	2.5	4.9	2.0	23.8	16.7	28.8
Part time	'000	12.6	10.9	8.2	4.2	5.3	1.8	1.6	1.3	9.2	14.8	18.1
Total	'000	20.5	21.8	14.9	6.9	8.7	2.9	5.8	2.1	25.7	23.3	32.5
Unemployed												
Looking for f/t work	'000	6.5	5.0	3.9	2.4	2.3	1.1	0.5	0.5	7.2	6.0	9.4
Looking for p/t work	'000	4.6	3.7	2.7	1.4	1.5	0.7	0.6	0.5	4.0	5.3	6.7
Total	'000	8.1	6.3	4.8	2.8	2.8	1.3	0.9	0.6	8.2	8.1	11.6
Labour force	'000	20.7	22.3	15.1	7.0	8.7	3.0	6.0	2.1	26.1	23.9	33.0
Not in labour force	'000	19.3	20.4	13.0	6.3	8.3	2.9	4.4	1.9	21.4	25.7	30.3
Unemployment rate												
Looking for f/t work	pts	0.3	0.3	0.2	0.4	0.3	0.6	0.6	0.3	0.1	0.2	0.1
Looking for p/t work	pts	0.5	0.5	0.4	0.6	0.5	0.9	2.3	0.9	0.4	0.2	0.2
Total	pts	0.2	0.2	0.2	0.3	0.2	0.5	0.8	0.3	0.1	0.2	0.1
Participation rate	pts	0.4	0.5	0.5	0.5	0.5	0.8	3.9	0.8	0.3	0.3	0.2
Aged 15–19 years												
Employed												
Full time	'000	3.3	2.4	2.4	1.0	1.6	0.5	0.4	0.4	4.3	3.4	5.1
Part time	'000	4.2	3.6	3.2	1.4	1.8	0.6	0.5	0.5	4.7	5.4	6.9
Total	'000	5.1	4.3	4.1	1.7	2.4	0.8	0.7	0.6	6.1	6.1	8.4
Unemployed												
Looking for f/t work	'000	2.6	1.8	1.6	0.9	1.0	0.4	0.4	0.2	3.1	2.2	3.8
Looking for p/t work	'000	2.7	2.2	2.0	0.9	1.0	0.5	0.2	0.3	2.8	3.2	4.3
Total	'000	3.9	2.9	2.6	1.3	1.4	0.6	0.4	0.4	4.2	3.9	5.8
Labour force	'000	5.6	4.6	4.4	1.9	2.6	0.9	0.7	0.7	6.5	6.5	9.0
Not in labour force	'000	7.3	5.6	4.0	2.2	2.6	0.9	1.1	0.7	7.2	6.9	10.2
Unemployment rate												
Looking for f/t work	pts	2.7	3.1	2.1	4.5	2.1	5.8	9.0	4.2	1.5	2.1	1.2
Looking for p/t work	pts	1.7	1.6	1.5	2.1	1.8	3.7	4.6	3.0	1.2	1.0	0.8
Total	pts	1.5	1.5	1.3	2.1	1.4	3.1	5.0	2.5	1.0	0.9	0.7
Participation rate	pts	1.2	1.3	1.5	1.8	1.7	2.5	4.7	2.8	0.9	0.9	0.6
Unemployment to population ratio – looking for f/t work	pts	0.6	0.5	0.5	0.9	0.6	1.2	2.3	0.7	0.4	0.3	0.3

STANDARD ERRORS *continued*

MOVEMENT ESTIMATES

The following example illustrates how to use the standard error to interpret a movement estimate. Let us say that one month the published level estimate for females employed part-time in Australia is 1,890,000; the next month the published level estimate is 1,900,000 and the associated standard error for the movement estimate is 9,500. The standard error is then used to interpret the published movement estimate of 10,000. For instance, the standard error of 9,500 indicates that:

- There are approximately two chances in three that the real movement between the two months falls within the range 500 to 19,500 (10,000 + or - 9,500)
- There are approximately nineteen chances in twenty that the real movement falls within the range -9,000 to 29,000 (10,000 + or - 19,000).

The following table shows the standard errors for this month's movement estimates.

		AUSTRALIA										
		NSW	Vic.	Qld	SA	WA	Tas.	NT	ACT	Males	Females	Persons
Aged 15 years and over												
Employed												
Full time	'000	12.5	9.7	8.4	3.4	4.9	1.6	1.6	1.4	15.5	11.2	19.5
Part time	'000	7.8	6.2	5.0	2.4	3.1	1.1	0.8	0.8	6.6	10.1	11.9
Total	'000	14.9	11.7	11.0	4.6	6.1	1.9	1.8	1.6	16.9	15.2	23.5
Unemployed												
Looking for f/t work	'000	6.9	4.9	4.2	2.3	2.4	1.0	0.5	0.5	7.4	6.3	9.7
Looking for p/t work	'000	4.7	3.9	3.1	1.4	1.7	0.7	0.6	0.5	4.2	5.6	7.0
Total	'000	8.4	6.3	5.3	2.7	2.9	1.2	0.7	0.8	8.5	8.5	12.1
Labour force	'000	15.3	11.9	11.4	4.9	6.2	2.0	1.9	1.6	17.2	15.6	24.1
Not in labour force	'000	14.1	11.1	9.7	4.5	5.4	1.9	1.5	1.5	13.2	16.6	21.9
Unemployment rate												
Looking for f/t work	pts	0.3	0.3	0.3	0.4	0.3	0.6	0.6	0.3	0.1	0.2	0.1
Looking for p/t work	pts	0.5	0.5	0.5	0.6	0.5	0.9	2.6	1.0	0.5	0.3	0.2
Total	pts	0.2	0.2	0.2	0.3	0.3	0.5	0.8	0.4	0.1	0.2	0.1
Participation rate	pts	0.3	0.3	0.3	0.4	0.4	0.5	1.2	0.6	0.2	0.2	0.1
Aged 15-19 years												
Employed												
Full time	'000	2.5	1.8	2.0	0.8	1.3	0.4	0.3	0.3	3.3	2.7	3.9
Part time	'000	3.3	2.7	2.5	1.1	1.4	0.5	0.4	0.4	3.7	4.1	5.1
Total	'000	3.9	3.1	3.0	1.3	1.8	0.6	0.5	0.5	4.6	4.6	6.1
Unemployed												
Looking for f/t work	'000	2.7	1.8	1.7	0.9	1.0	0.5	0.3	0.2	3.2	2.5	3.9
Looking for p/t work	'000	2.8	2.4	2.1	0.8	1.1	0.5	0.1	0.4	2.9	3.3	4.4
Total	'000	3.9	3.0	2.8	1.3	1.5	0.6	0.4	0.4	4.3	4.0	5.9
Labour force	'000	4.2	3.3	3.1	1.3	1.9	0.6	0.5	0.5	4.9	4.8	6.5
Not in labour force	'000	4.7	3.6	2.9	1.4	1.8	0.6	0.7	0.5	5.3	5.0	6.9
Unemployment rate												
Looking for f/t work	pts	2.9	3.3	2.3	4.7	2.2	6.0	9.4	3.9	1.6	2.2	1.3
Looking for p/t work	pts	1.8	1.7	1.6	2.0	2.0	3.6	4.6	3.3	1.3	1.0	0.8
Total	pts	1.6	1.6	1.3	2.1	1.5	3.2	5.3	2.6	1.0	1.0	0.7
Participation rate	pts	0.9	1.0	1.1	1.3	1.3	1.8	3.3	2.2	0.7	0.7	0.5
Unemployment to population ratio - looking for f/t work												
	pts	0.6	0.5	0.6	0.9	0.7	1.3	1.9	0.7	0.4	0.4	0.3

GLOSSARY

Actively looking for work	Includes writing, telephoning or applying in person to an employer for work; answering an advertisement for a job; checking factory noticeboards or the touchscreens at the Centrelink offices; being registered with Centrelink as a jobseeker; checking or registering with any other employment agency; advertising or tendering for work; and contacting friends or relatives.
Attending full-time education	Persons aged 15–24 years enrolled at secondary or high school or enrolled as a full-time student at a Technical and Further Education (TAFE) college, university, or other educational institution in the reference week.
Attending school	Persons aged 15–19 years enrolled at secondary or high school in the reference week.
Attending tertiary educational institution full time	Persons aged 15–24 years enrolled full time at a TAFE college, university, or other educational institution in the reference week, except those persons aged 15–19 years who were still attending school.
Civilian population aged 15 years and over	All usual residents of Australia aged 15 years and over except members of the permanent defence forces, certain diplomatic personnel of overseas governments customarily excluded from census and estimated population counts, overseas residents in Australia, and members of non-Australian defence forces (and their dependants) stationed in Australia.
Composite Estimation	The estimation methodology used in the Labour Force Survey. Composite Estimation uses sample responses from nearby months as well as from the reference month to derive estimates for the reference month. This approach achieves gains in efficiency by exploiting the high similarity between the responses provided by the same respondent in previous months. For details see <i>Information Paper: Forthcoming Changes to Labour Force Statistics, 2007</i> (cat. no. 6292.0).
Employed	All persons aged 15 years and over who, during the reference week: <ul style="list-style-type: none">■ worked for one hour or more for pay, profit, commission or payment in kind in a job or business, or on a farm (comprising employees, employers and own account workers); or■ worked for one hour or more without pay in a family business or on a farm (i.e. contributing family workers); or■ were employees who had a job but were not at work and were:<ul style="list-style-type: none">■ away from work for less than four weeks up to the end of the reference week; or■ away from work for more than four weeks up to the end of the reference week and received pay for some or all of the four week period to the end of the reference week; or■ away from work as a standard work or shift arrangement; or■ on strike or locked out; or■ on workers' compensation and expected to return to their job; or■ were employers or own account workers, who had a job, business or farm, but were not at work.
Employment to population ratio	For any group, the number of employed persons expressed as a percentage of the civilian population in the same group.
Full-time workers	Employed persons who usually worked 35 hours or more a week (in all jobs) and those who, although usually working less than 35 hours a week, worked 35 hours or more during the reference week.
Labour force	For any group, persons who were employed or unemployed, as defined.
Labour force status	A classification of the civilian population aged 15 years and over into employed, unemployed or not in the labour force, as defined. The definitions conform closely to the international standard definitions adopted by the International Conferences of Labour Statisticians.
Not in labour force	Persons who were not in the categories employed or unemployed as defined.

GLOSSARY *continued*

Participation rate	For any group, the labour force expressed as a percentage of the civilian population aged 15 years and over in the same group.
Part-time workers	Employed persons who usually worked less than 35 hours a week (in all jobs) and either did so during the reference week, or were not at work in the reference week.
Response rate	The number of fully responding dwellings expressed as a percentage of the total number of dwellings excluding sample loss. Examples of sample loss include: dwellings where all persons are out of scope and/or coverage; vacant dwellings; dwellings under construction; dwellings converted to non-dwellings; derelict dwellings; and demolished dwellings.
Seasonally adjusted series	A time series of estimates with the estimated effects of normal seasonal variation removed. See Explanatory Notes 25 to 29 for more detail.
Trend series	A smoothed seasonally adjusted series of estimates. See Explanatory Notes 30 to 33 for more detail.
Unemployed	Persons aged 15 years and over who were not employed during the reference week, and: <ul style="list-style-type: none">■ had actively looked for full-time or part-time work at any time in the four weeks up to the end of the reference week and were available for work in the reference week; or■ were waiting to start a new job within four weeks from the end of the reference week and could have started in the reference week if the job had been available then.
Unemployed looking for full-time work	Unemployed persons who: <ul style="list-style-type: none">■ actively looked for full-time work; or■ were waiting to start a new full-time job.
Unemployed looking for part-time work	Unemployed persons who: <ul style="list-style-type: none">■ actively looked for part-time work only; or■ were waiting to start a new part-time job.
Unemployment rate	For any group, the number of unemployed persons expressed as a percentage of the labour force in the same group.
Unemployment to population ratio	For any group, the number of unemployed persons expressed as a percentage of the civilian population in the same group.

FOR MORE INFORMATION . . .

- INTERNET* **www.abs.gov.au** the ABS website is the best place for data from our publications and information about the ABS.
- LIBRARY* A range of ABS publications are available from public and tertiary libraries Australia wide. Contact your nearest library to determine whether it has the ABS statistics you require, or visit our website for a list of libraries.

INFORMATION AND REFERRAL SERVICE

Our consultants can help you access the full range of information published by the ABS that is available free of charge from our website, or purchase a hard copy publication. Information tailored to your needs can also be requested as a 'user pays' service. Specialists are on hand to help you with analytical or methodological advice.

- PHONE* 1300 135 070
- EMAIL* client.services@abs.gov.au
- FAX* 1300 135 211
- POST* Client Services, ABS, GPO Box 796, Sydney NSW 2001

FREE ACCESS TO STATISTICS

All statistics on the ABS website can be downloaded free of charge.

- WEB ADDRESS* www.abs.gov.au



2620200010074

ISSN 1448 2819

RRP \$25.00